

## Product datasheet for **TA345106**

### Acetylcholinesterase (ACHE) Rabbit Polyclonal Antibody

#### Product data:

Product Type:	Primary Antibodies
Applications:	WB
Recommended Dilution:	WB
Reactivity:	Human
Host:	Rabbit
Isotype:	IgG
Clonality:	Polyclonal
Immunogen:	The immunogen for anti-ACHE antibody: synthetic peptide directed towards the middle region of human ACHE. Synthetic peptide located within the following region: VGWVKDEGSYFLVYGAPGFSKDNESLISRAEFLAGVRVGVQPQVSDLAAEA
Formulation:	Liquid. Purified antibody supplied in 1x PBS buffer with 0.09% (w/v) sodium azide and 2% sucrose. <i>Note that this product is shipped as lyophilized powder to China customers.</i>
Purification:	Affinity Purified
Conjugation:	Unconjugated
Storage:	Store at -20°C as received.
Stability:	Stable for 12 months from date of receipt.
Predicted Protein Size:	68 kDa
Gene Name:	acetylcholinesterase (Cartwright blood group)
Database Link:	<a href="#">NP_000656</a> <a href="#">Entrez Gene 43 Human</a> <a href="#">P22303</a>
Background:	This gene encodes a member of the neuroD family of neurogenic basic helix-loop-helix (bHLH) proteins. Expression of this gene can induce transcription from neuron-specific promoters, such as the GAP-43 promoter, which contain a specific DNA sequence known as an E-box. The product of the human gene can induce neurogenic differentiation in non-neuronal cells in <i>Xenopus</i> embryos, and is thought to play a role in the determination and maintenance of neuronal cell fates. [provided by RefSeq, Jul 2008]



[View online »](#)

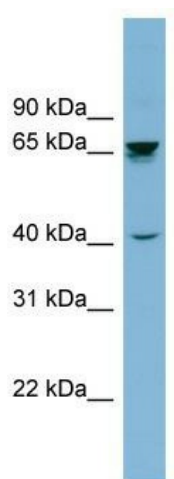
**Synonyms:** ACEE; ARACHE; N-ACHE; YT

**Note:** Immunogen Sequence Homology: Rat: 100%; Human: 100%; Zebrafish: 100%; Dog: 93%; Pig: 93%; Horse: 93%; Mouse: 93%; Bovine: 93%; Guinea pig: 93%; Rabbit: 86%

**Protein Families:** Druggable Genome

**Protein Pathways:** Glycerophospholipid metabolism

**Product images:**



WB Suggested Anti-ACHE Antibody Titration: 0.2-1 ug/ml; ELISA Titer: 1:62500; Positive Control: THP-1 cell lysate