

Product datasheet for **TA345105**

UBXN1 Rabbit Polyclonal Antibody

Product data:

Product Type:	Primary Antibodies
Applications:	WB
Recommended Dilution:	WB
Reactivity:	Human
Host:	Rabbit
Isotype:	IgG
Clonality:	Polyclonal
Immunogen:	The immunogen for anti-UBXN1 antibody: synthetic peptide directed towards the middle region of human LOC51035. Synthetic peptide located within the following region: RIQVRLPDGTSLTQTFRAREQLAAVRLYVELHRGEELGGGQDPVQLLSGF
Formulation:	Liquid. Purified antibody supplied in 1x PBS buffer with 0.09% (w/v) sodium azide and 2% sucrose. <i>Note that this product is shipped as lyophilized powder to China customers.</i>
Purification:	Affinity Purified
Conjugation:	Unconjugated
Storage:	Store at -20°C as received.
Stability:	Stable for 12 months from date of receipt.
Predicted Protein Size:	35 kDa
Gene Name:	UBX domain protein 1
Database Link:	NP_056937 Entrez Gene 51035 Human Q04323
Background:	Ubiquitin-binding protein that interacts with the BRCA1-BARD1 heterodimer, and regulates its activity. Specifically binds 'Lys-6'-linked polyubiquitin chains. Interaction with autoubiquitinated BRCA1, leads to inhibit the E3 ubiquitin-protein ligase activity of the BRCA1-BARD1 heterodimer. Component of a complex required to couple deglycosylation and proteasome-mediated degradation of misfolded proteins in the endoplasmic reticulum that are retrotranslocated in the cytosol.



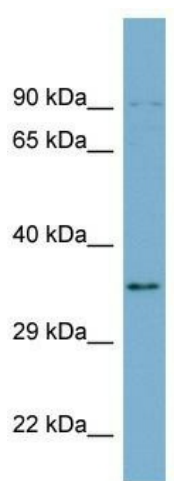
[View online »](#)

Synonyms: 2B28; SAKS1; UBXD10

Note: Immunogen Sequence Homology: Dog: 100%; Pig: 100%; Rat: 100%; Goat: 100%; Horse: 100%; Human: 100%; Mouse: 100%; Bovine: 100%; Rabbit: 100%; Guinea pig: 93%

Protein Families: Druggable Genome

Product images:



WB Suggested Anti-UBXN1 Antibody Titration: 0.2-1 ug/ml; ELISA Titer: 1:62500; Positive Control: Hela cell lysate. UBXN1 is supported by BioGPS gene expression data to be expressed in HeLa