

Product datasheet for **TA345102**

LAP3 Rabbit Polyclonal Antibody

Product data:

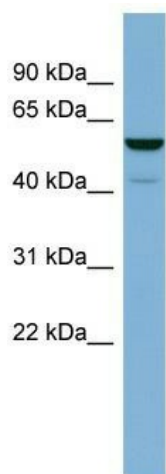
Product Type:	Primary Antibodies
Applications:	WB
Recommended Dilution:	WB
Reactivity:	Human
Host:	Rabbit
Isotype:	IgG
Clonality:	Polyclonal
Immunogen:	The immunogen for anti-LAP3 antibody: synthetic peptide directed towards the N terminal of human LAP3. Synthetic peptide located within the following region: LNISGPPLKAGKTRTFYGLHQDFPSVVLVGLGKKAAGIDEQENWHEGKEN
Formulation:	Liquid. Purified antibody supplied in 1x PBS buffer with 0.09% (w/v) sodium azide and 2% sucrose.
Purification:	Affinity Purified
Conjugation:	Unconjugated
Storage:	Store at -20°C as received.
Stability:	Stable for 12 months from date of receipt.
Predicted Protein Size:	56 kDa
Gene Name:	leucine aminopeptidase 3
Database Link:	NP_056991 Entrez Gene 51056 Human P28838
Background:	LAP3 is presumably involved in the processing and regular turnover of intracellular proteins. LAP3 catalyzes the removal of unsubstituted N-terminal amino acids from various peptides.
Synonyms:	HEL-S-106; LAP; LAPEP; PEPS
Note:	Immunogen Sequence Homology: Dog: 100%; Pig: 100%; Rat: 100%; Horse: 100%; Human: 100%; Mouse: 100%; Bovine: 100%; Rabbit: 100%; Guinea pig: 93%
Protein Families:	Druggable Genome, Protease



[View online »](#)

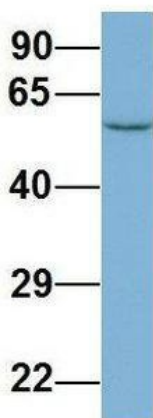
Protein Pathways: Arginine and proline metabolism, Glutathione metabolism, Metabolic pathways

Product images:



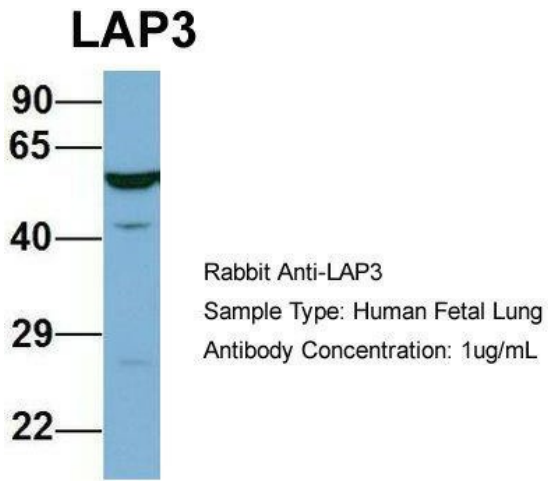
WB Suggested Anti-LAP3 Antibody Titration: 0.2-1 ug/ml; ELISA Titer: 1:312500; Positive Control: Human heart

LAP3

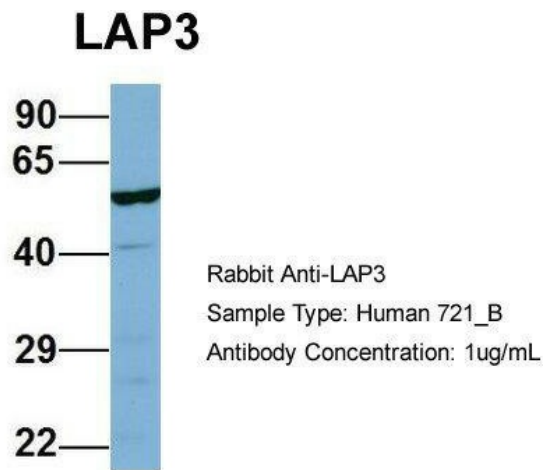


Rabbit Anti-LAP3
 Sample Type: Human Fetal Brain
 Antibody Concentration: 1ug/mL

Host: Rabbit; Target Name: LAP3; Sample Tissue: Human Fetal Brain; Antibody Dilution: 1.0 ug/ml



Host: Rabbit; Target Name: LAP3; Sample Tissue: Human Fetal Lung; Antibody Dilution: 1.0 ug/ml



Host: Rabbit; Target Name: LAP3; Sample Tissue: Human 721_B; Antibody Dilution: 1.0 ug/ml; LAP3 is supported by BioGPS gene expression data to be expressed in 721_B