

## Product datasheet for **TA345101**

### LAP3 Rabbit Polyclonal Antibody

#### Product data:

Product Type:	Primary Antibodies
Applications:	WB
Recommended Dilution:	WB
Reactivity:	Mouse
Host:	Rabbit
Isotype:	IgG
Clonality:	Polyclonal
Immunogen:	The immunogen for anti-Lap3 antibody: synthetic peptide corresponding to a region of Mouse. Synthetic peptide located within the following region: QDLELPSVEVDPCGDAQAAEGAVLGLYEYDDLKQKKKVAVSAKLHGSGD
Formulation:	Liquid. Purified antibody supplied in 1x PBS buffer with 0.09% (w/v) sodium azide and 2% sucrose. <i>Note that this product is shipped as lyophilized powder to China customers.</i>
Purification:	Affinity Purified
Conjugation:	Unconjugated
Storage:	Store at -20°C as received.
Stability:	Stable for 12 months from date of receipt.
Predicted Protein Size:	57 kDa
Gene Name:	leucine aminopeptidase 3
Database Link:	<a href="#">NP_056991</a> <a href="#">Entrez Gene 51056 Human P28838</a>
Background:	Lap3 is presumably involved in the processing and regular turnover of intracellular proteins. It catalyzes the removal of unsubstituted N-terminal amino acids from various peptides.
Synonyms:	HEL-S-106; LAP; LAPEP; PEPS
Note:	Immunogen Sequence Homology: Dog: 100%; Rat: 100%; Horse: 100%; Human: 100%; Mouse: 100%; Rabbit: 100%; Pig: 93%; Bovine: 93%; Guinea pig: 86%; Zebrafish: 79%

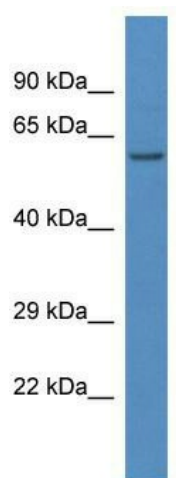


[View online »](#)

Protein Families: Druggable Genome, Protease

Protein Pathways: Arginine and proline metabolism, Glutathione metabolism, Metabolic pathways

### Product images:



WB Suggested Anti-Lap3 Antibody; Titration: 1.0 ug/ml; Positive Control: Mouse Liver