

## Product datasheet for **TA345099**

### POP5 Rabbit Polyclonal Antibody

#### Product data:

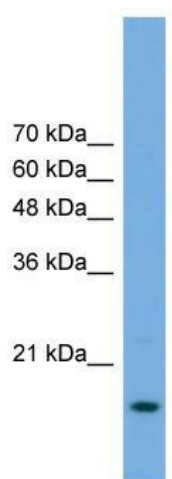
Product Type:	Primary Antibodies
Applications:	WB
Recommended Dilution:	WB
Reactivity:	Human
Host:	Rabbit
Isotype:	IgG
Clonality:	Polyclonal
Immunogen:	The immunogen for anti-POP5 antibody: synthetic peptide directed towards the middle region of human POP5. Synthetic peptide located within the following region: KEFYQLVWSALPFITYLENKGHRYPCCFFNTLHVGGTIRTCQKFLIQYNRR
Formulation:	Liquid. Purified antibody supplied in 1x PBS buffer with 0.09% (w/v) sodium azide and 2% sucrose. <i>Note that this product is shipped as lyophilized powder to China customers.</i>
Purification:	Affinity Purified
Conjugation:	Unconjugated
Storage:	Store at -20°C as received.
Stability:	Stable for 12 months from date of receipt.
Predicted Protein Size:	19 kDa
Gene Name:	POP5 homolog, ribonuclease P/MRP subunit
Database Link:	<a href="#">NP_057002</a> <a href="#">Entrez Gene 51367 Human Q969H6</a>
Background:	POP5 is a component of ribonuclease P, a protein complex that generates mature tRNA molecules by cleaving their 5'-ends. POP5 is also a component of RNase MRP.
Synonyms:	hPop5; HSPC004; RPP2; RPP20
Note:	Immunogen Sequence Homology: Dog: 100%; Pig: 100%; Rat: 100%; Horse: 100%; Human: 100%; Mouse: 100%; Guinea pig: 100%; Bovine: 93%; Rabbit: 93%; Zebrafish: 75%



[View online »](#)

Protein Families: Stem cell - Pluripotency

**Product images:**



WB Suggested Anti-POP5 Antibody Titration: 0.2-1 ug/ml; Positive Control: Transfected 293T