

Product datasheet for **TA345097**

RPS27L Rabbit Polyclonal Antibody

Product data:

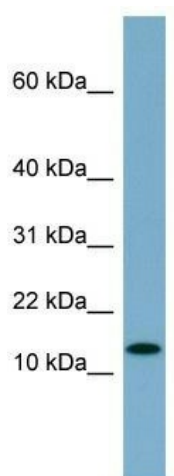
Product Type:	Primary Antibodies
Applications:	WB
Recommended Dilution:	WB
Reactivity:	Human
Host:	Rabbit
Isotype:	IgG
Clonality:	Polyclonal
Immunogen:	The immunogen for anti-RPS27L antibody: synthetic peptide directed towards the N terminal of human RPS27L. Synthetic peptide located within the following region: MPLARDLLHPSLEEEKKKHKRLVQSPNSYFMDVKCPGKYKITTVFSHA
Formulation:	Liquid. Purified antibody supplied in 1x PBS buffer with 0.09% (w/v) sodium azide and 2% sucrose. <i>Note that this product is shipped as lyophilized powder to China customers.</i>
Purification:	Affinity Purified
Conjugation:	Unconjugated
Storage:	Store at -20°C as received.
Stability:	Stable for 12 months from date of receipt.
Predicted Protein Size:	9 kDa
Gene Name:	ribosomal protein S27 like
Database Link:	NP_057004 Entrez Gene 51065 Human Q71UM5
Background:	This gene encodes a protein sharing 96% amino acid similarity with ribosomal protein S27, which suggests the encoded protein may be a component of the 40S ribosomal subunit. [provided by RefSeq, Jul 2008]
Synonyms:	40S ribosomal protein S27-like; ribosomal protein S27-like
Note:	Immunogen Sequence Homology: Pig: 100%; Rat: 100%; Horse: 100%; Human: 100%; Mouse: 100%; Rabbit: 100%; Guinea pig: 100%; Dog: 93%; Bovine: 93%; Goat: 91%; Yeast: 79%



[View online »](#)

Protein Pathways: Ribosome

Product images:



WB Suggested Anti-RPS27L Antibody Titration:
0.2-1 ug/ml; ELISA Titer: 1:62500; Positive Control:
MCF7 cell lysate RPS27L is supported by BioGPS
gene expression data to be expressed in MCF7