

Product datasheet for **TA345095**

TRMT6 Rabbit Polyclonal Antibody

Product data:

Product Type:	Primary Antibodies
Applications:	WB
Recommended Dilution:	WB
Reactivity:	Human
Host:	Rabbit
Isotype:	IgG
Clonality:	Polyclonal
Immunogen:	The immunogen for anti-TRMT6 antibody: synthetic peptide directed towards the middle region of human TRMT6. Synthetic peptide located within the following region: GAMMERMGGFGSIIQLYPGGGPVRAATAACFGFPKSFLSGLYEFPLNKVDS
Formulation:	Liquid. Purified antibody supplied in 1x PBS buffer with 0.09% (w/v) sodium azide and 2% sucrose. <i>Note that this product is shipped as lyophilized powder to China customers.</i>
Purification:	Affinity Purified
Conjugation:	Unconjugated
Storage:	Store at -20°C as received.
Stability:	Stable for 12 months from date of receipt.
Predicted Protein Size:	56 kDa
Gene Name:	tRNA methyltransferase 6
Database Link:	NP_057023 Entrez Gene 51605 Human Q9UJA5
Background:	This gene encodes a member of the tRNA methyltransferase 6 protein family. A similar protein in yeast is part of a two component methyltransferase, which is involved in the posttranslational modification that produces the modified nucleoside 1-methyladenosine in tRNAs. Modified 1-methyladenosine influences initiator methionine stability and may be involved in the replication of human immunodeficiency virus type 1. Alternative splicing results in multiple transcript variants. [provided by RefSeq, Jul 2013]

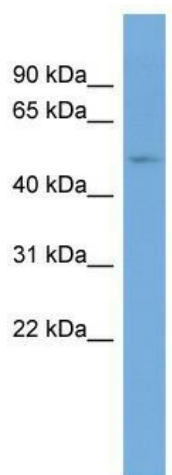


[View online »](#)

Synonyms: CGI-09; GCD10; Gcd10p

Note: Immunogen Sequence Homology: Dog: 100%; Pig: 100%; Rat: 100%; Horse: 100%; Human: 100%; Mouse: 100%; Bovine: 100%; Rabbit: 100%; Guinea pig: 93%

Product images:



WB Suggested Anti-TRMT6 Antibody Titration:
0.2-1 ug/ml; ELISA Titer: 1:62500; Positive Control:
PANC1 cell lysate