

Product datasheet for **TA345090**

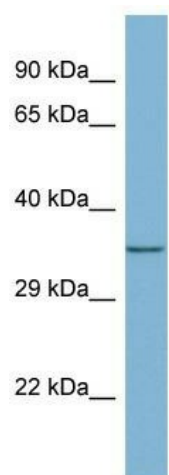
MEMO1 Rabbit Polyclonal Antibody

Product data:

Product Type:	Primary Antibodies
Applications:	WB
Recommended Dilution:	WB
Reactivity:	Human
Host:	Rabbit
Isotype:	IgG
Clonality:	Polyclonal
Immunogen:	The immunogen for anti-MEMO1 antibody: synthetic peptide directed towards the middle region of human MEMO1. Synthetic peptide located within the following region: AMESHKDEFTIIPVLVGALSESKEQEFGLFSKYLADPSNLFVSSDFCH
Formulation:	Liquid. Purified antibody supplied in 1x PBS buffer with 0.09% (w/v) sodium azide and 2% sucrose.
Purification:	Affinity Purified
Conjugation:	Unconjugated
Storage:	Store at -20°C as received.
Stability:	Stable for 12 months from date of receipt.
Predicted Protein Size:	34 kDa
Gene Name:	mediator of cell motility 1
Database Link:	NP_057039 Entrez Gene 51072 Human Q9Y316
Background:	MEMO1 may control cell migration by relaying extracellular chemotactic signals to the microtubule cytoskeleton. MEMO1 is the mediator of ERBB2 signaling. MEMO1 is required for breast carcinoma cell migration.
Synonyms:	C2orf4; CGI-27; MEMO; NS5ATP7
Note:	Immunogen Sequence Homology: Dog: 100%; Pig: 100%; Rat: 100%; Horse: 100%; Human: 100%; Mouse: 100%; Bovine: 100%; Rabbit: 100%; Guinea pig: 100%; Zebrafish: 86%



[View online »](#)

Product images:

WB Suggested Anti-MEMO1 Antibody Titration:
0.2-1 ug/ml; ELISA Titer: 1:1562500; Positive
Control: Human heart