

Product datasheet for **TA345088**

APIP Rabbit Polyclonal Antibody

Product data:

Product Type:	Primary Antibodies
Applications:	WB
Recommended Dilution:	WB
Reactivity:	Human
Host:	Rabbit
Isotype:	IgG
Clonality:	Polyclonal
Immunogen:	The immunogen for anti-APIP antibody: synthetic peptide directed towards the middle region of human APIP. Synthetic peptide located within the following region: GIKKCTSGGYRYDDMLVPIIENTPEEKDLKDRMAHAMNEYPDSCAVLV
Formulation:	Liquid. Purified antibody supplied in 1x PBS buffer with 0.09% (w/v) sodium azide and 2% sucrose. <i>Note that this product is shipped as lyophilized powder to China customers.</i>
Purification:	Affinity Purified
Conjugation:	Unconjugated
Storage:	Store at -20°C as received.
Stability:	Stable for 12 months from date of receipt.
Predicted Protein Size:	27 kDa
Gene Name:	APAF1 interacting protein
Database Link:	NP_057041 Entrez Gene 51074 Human Q96GX9



[View online »](#)

Background:

APIP is an APAF1 (MIM 602233)-interacting protein that acts as a negative regulator of ischemic/hypoxic injury (Cho et al., 2004 [PubMed 15262985]). [supplied by OMIM, Dec 2008]. Publication Note: This RefSeq record includes a subset of the publications that are available for this gene. Please see the Gene record to access additional publications. ##Evidence-Data-START## Transcript exon combination :: AF132963.1, BC008440.1 [ECO:0000332] RNAseq introns :: single sample supports all introns ERS025087, ERS025093 [ECO:0000348] ##Evidence-Data-END## COMPLETENESS: complete on the 3' end.

Synonyms:

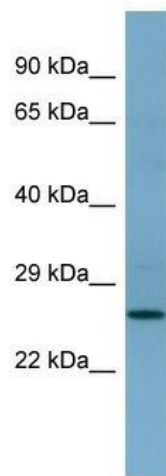
APIP2; CGI-29; CGI29; hAPIP; MMRP19

Note:

Immunogen Sequence Homology: Dog: 100%; Pig: 100%; Rat: 100%; Human: 100%; Mouse: 100%; Bovine: 100%; Rabbit: 100%; Zebrafish: 100%; Guinea pig: 100%; Horse: 93%; Yeast: 86%

Protein Pathways:

Cysteine and methionine metabolism, Metabolic pathways

Product images:

WB Suggested Anti-APIP Antibody Titration: 0.2-1 ug/ml; ELISA Titer: 1:312500; Positive Control: 721_B cell lysate APIP is supported by BioGPS gene expression data to be expressed in 721_B