

## Product datasheet for **TA345086**

### CUTC Rabbit Polyclonal Antibody

#### Product data:

Product Type:	Primary Antibodies
Applications:	WB
Recommended Dilution:	WB
Reactivity:	Human
Host:	Rabbit
Isotype:	IgG
Clonality:	Polyclonal
Immunogen:	The immunogen for anti-CUTC antibody: synthetic peptide directed towards the middle region of human CUTC. Synthetic peptide located within the following region: LEGLPLIKRLIEQAKGRIVVMPGGGITDRNLQRILEGSGATEFHCSARST
Formulation:	Liquid. Purified antibody supplied in 1x PBS buffer with 0.09% (w/v) sodium azide and 2% sucrose. <i>Note that this product is shipped as lyophilized powder to China customers.</i>
Purification:	Affinity Purified
Conjugation:	Unconjugated
Storage:	Store at -20°C as received.
Stability:	Stable for 12 months from date of receipt.
Predicted Protein Size:	29 kDa
Gene Name:	cutC copper transporter
Database Link:	<a href="#">NP_057044</a> <a href="#">Entrez Gene 51076 Human Q9NTM9</a>
Background:	Members of the CUT family of copper transporters are associated with copper homeostasis and are involved in the uptake, storage, delivery, and efflux of copper (Gupta et al., 1995 [PubMed 7635807]; Li et al., 2005 [PubMed 16182249]). [supplied by OMIM, Mar 2008]. ##Evidence-Data-START## Transcript exon combination :: BC028948.1, AF132966.1 [ECO:0000332] RNAseq introns :: single sample supports all introns ERS025081, ERS025082 [ECO:0000348] ##Evidence-Data-END##

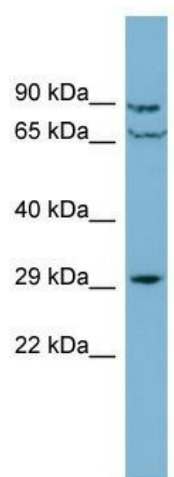


[View online »](#)

**Synonyms:** CGI-32

**Note:** Immunogen Sequence Homology: Dog: 100%; Pig: 100%; Rat: 100%; Horse: 100%; Human: 100%; Mouse: 100%; Bovine: 100%; Rabbit: 100%; Guinea pig: 100%; Zebrafish: 86%

**Product images:**



WB Suggested Anti-CUTC Antibody Titration: 0.2-1 ug/ml; ELISA Titer: 1:312500; Positive Control: Jurkat cell lysate. CUTC is supported by BioGPS gene expression data to be expressed in Jurkat