

## Product datasheet for **TA345082**

### **FAM108B1 (ABHD17B) Rabbit Polyclonal Antibody**

#### **Product data:**

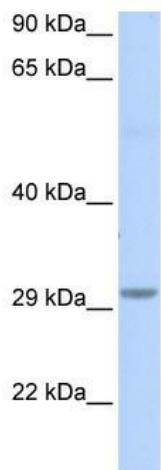
<b>Product Type:</b>	Primary Antibodies
<b>Applications:</b>	WB
<b>Recommended Dilution:</b>	WB
<b>Reactivity:</b>	Human
<b>Host:</b>	Rabbit
<b>Isotype:</b>	IgG
<b>Clonality:</b>	Polyclonal
<b>Immunogen:</b>	The immunogen for anti-FAM108B1 antibody: synthetic peptide directed towards the middle region of human FAM108B1. Synthetic peptide located within the following region: SSFYIGLGSRLNCFSYDYSYGASSGKPTKLNLYADIEAAWLALRTRY
<b>Formulation:</b>	Liquid. Purified antibody supplied in 1x PBS buffer with 0.09% (w/v) sodium azide and 2% sucrose. <i>Note that this product is shipped as lyophilized powder to China customers.</i>
<b>Purification:</b>	Affinity Purified
<b>Conjugation:</b>	Unconjugated
<b>Storage:</b>	Store at -20°C as received.
<b>Stability:</b>	Stable for 12 months from date of receipt.
<b>Predicted Protein Size:</b>	32 kDa
<b>Gene Name:</b>	abhydrolase domain containing 17B
<b>Database Link:</b>	<a href="#">NP_057098</a> <a href="#">Entrez Gene 51104 Human</a> <a href="#">Q5VST6</a>
<b>Background:</b>	FAM108B1 belongs to the AB hydrolase superfamily.fAM108 family. The exact function of FAM108B1 remains unknown.
<b>Synonyms:</b>	C9orf77; CGI-67; FAM108B1
<b>Note:</b>	Immunogen Sequence Homology: Dog: 100%; Pig: 100%; Rat: 100%; Horse: 100%; Human: 100%; Mouse: 100%; Bovine: 100%; Rabbit: 100%; Guinea pig: 100%; Zebrafish: 93%; Goat: 79%



[View online »](#)

Protein Families: Protease

### Product images:



WB Suggested Anti-FAM108B1 Antibody Titration:  
0.2-1 ug/ml; ELISA Titer: 1:312500; Positive  
Control: Human brain