

Product datasheet for **TA345081**

OTUD6B Rabbit Polyclonal Antibody

Product data:

Product Type:	Primary Antibodies
Applications:	WB
Recommended Dilution:	WB
Reactivity:	Human
Host:	Rabbit
Isotype:	IgG
Clonality:	Polyclonal
Immunogen:	The immunogen for anti-OTUD6B antibody: synthetic peptide directed towards the middle region of human OTUD6B. Synthetic peptide located within the following region: EIIQADSPPIIVGEEYSKKPLILVYMRHAYGLGEHYNSVTRLVNIVTENC
Formulation:	Liquid. Purified antibody supplied in 1x PBS buffer with 0.09% (w/v) sodium azide and 2% sucrose.
Purification:	Affinity Purified
Conjugation:	Unconjugated
Storage:	Store at -20°C as received.
Stability:	Stable for 12 months from date of receipt.
Predicted Protein Size:	37 kDa
Gene Name:	OTU domain containing 6B
Database Link:	NP_057107 Entrez Gene 51633 Human Q8N6M0
Background:	This gene encodes a member of the ovarian tumor domain (OTU)-containing subfamily of deubiquitinating enzymes. Deubiquitinating enzymes are primarily involved in removing ubiquitin from proteins targeted for degradation. This protein may function as a negative regulator of the cell cycle in B cells. [provided by RefSeq, Nov 2013]
Synonyms:	CGI-77; DUBA-5; DUBA5

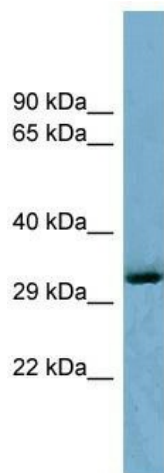


[View online »](#)

Note: Immunogen Sequence Homology: Dog: 100%; Pig: 100%; Rat: 100%; Goat: 100%; Horse: 100%; Human: 100%; Mouse: 100%; Yeast: 100%; Bovine: 100%; Rabbit: 100%; Zebrafish: 100%; Guinea pig: 100%

Protein Families: Protease

Product images:



WB Suggested Anti-OTUD6B Antibody Titration:
0.2-1 ug/ml; ELISA Titer: 1:1562500; Positive
Control: 293T cell lysate