

Product datasheet for **TA345080**

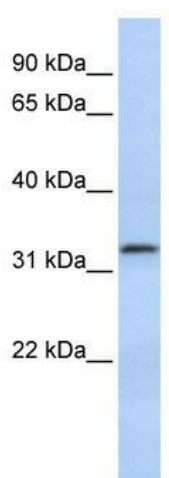
LACTB2 Rabbit Polyclonal Antibody

Product data:

Product Type:	Primary Antibodies
Applications:	WB
Recommended Dilution:	WB
Reactivity:	Human
Host:	Rabbit
Isotype:	IgG
Clonality:	Polyclonal
Immunogen:	The immunogen for anti-LACTB2 antibody: synthetic peptide directed towards the middle region of human LACTB2. Synthetic peptide located within the following region: NPQREEIIGNGEQQYVYLKDGDKVIKTEGATLRVLYTPGHTDDHMALLEE
Formulation:	Liquid. Purified antibody supplied in 1x PBS buffer with 0.09% (w/v) sodium azide and 2% sucrose.
Purification:	Affinity Purified
Conjugation:	Unconjugated
Storage:	Store at -20°C as received.
Stability:	Stable for 12 months from date of receipt.
Predicted Protein Size:	33 kDa
Gene Name:	lactamase beta 2
Database Link:	NP_057111 Entrez Gene 51110 Human Q53H82
Background:	The specific function of LACTB2 is not yet known.
Synonyms:	CGI-83
Note:	Immunogen Sequence Homology: Pig: 100%; Rat: 100%; Human: 100%; Mouse: 100%; Horse: 93%; Bovine: 93%; Rabbit: 93%; Zebrafish: 93%; Guinea pig: 93%; Dog: 86%; Yeast: 85%



[View online »](#)

Product images:

WB Suggested Anti-LACTB2 Antibody Titration:
0.2-1 ug/ml; ELISA Titer: 1:1562500; Positive
Control: 721_B cell lysate LACTB2 is supported by
BioGPS gene expression data to be expressed in
721_B