

Product datasheet for **TA345077**

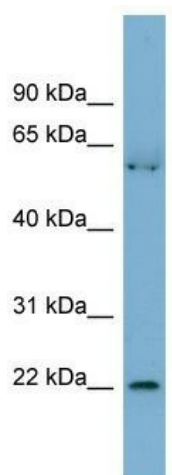
SLMO2 (PRELID3B) Rabbit Polyclonal Antibody

Product data:

Product Type:	Primary Antibodies
Applications:	WB
Recommended Dilution:	WB
Reactivity:	Human
Host:	Rabbit
Isotype:	IgG
Clonality:	Polyclonal
Immunogen:	The immunogen for anti-SLMO2 antibody: synthetic peptide directed towards the N terminal of human SLMO2. Synthetic peptide located within the following region: GVDVLDRHIDPSGKLSHRLSTEWGLPSIVKSLIGAARTKTYVQEHSV
Formulation:	Liquid. Purified antibody supplied in 1x PBS buffer with 0.09% (w/v) sodium azide and 2% sucrose. <i>Note that this product is shipped as lyophilized powder to China customers.</i>
Purification:	Affinity Purified
Conjugation:	Unconjugated
Storage:	Store at -20°C as received.
Stability:	Stable for 12 months from date of receipt.
Predicted Protein Size:	21 kDa
Gene Name:	PRELI domain containing 3B
Database Link:	NP_057129 Entrez Gene 51012 Human Q9Y3B1
Background:	The function of this protein remains unknown.
Synonyms:	C20orf45; dj543j19.5; SLMO2
Note:	Immunogen Sequence Homology: Dog: 100%; Pig: 100%; Rat: 100%; Horse: 100%; Human: 100%; Mouse: 100%; Bovine: 100%; Rabbit: 100%; Guinea pig: 100%



[View online »](#)

Product images:

WB Suggested Anti-SLMO2 Antibody Titration:
0.2-1 ug/ml; Positive Control: Human Stomach