

Product datasheet for **TA345070**

HDGFL3 Rabbit Polyclonal Antibody

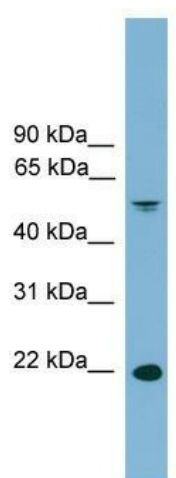
Product data:

Product Type:	Primary Antibodies
Applications:	WB
Recommended Dilution:	WB
Reactivity:	Human
Host:	Rabbit
Isotype:	IgG
Clonality:	Polyclonal
Immunogen:	The immunogen for anti-HDGFRP3 antibody: synthetic peptide directed towards the middle region of human HDGFRP3. Synthetic peptide located within the following region: GSKRKKSYTSKSSKQSRKSPGDEDDKDCKEEENKSSSEGGDAGNDTRNT
Formulation:	Liquid. Purified antibody supplied in 1x PBS buffer with 0.09% (w/v) sodium azide and 2% sucrose. <i>Note that this product is shipped as lyophilized powder to China customers.</i>
Purification:	Affinity Purified
Conjugation:	Unconjugated
Storage:	Store at -20°C as received.
Stability:	Stable for 12 months from date of receipt.
Predicted Protein Size:	22 kDa
Gene Name:	HDGF like 3
Database Link:	NP_057157 Entrez Gene 50810 Human Q9Y3E1
Background:	HDGFRP3 enhances DNA synthesis and may play a role in cell proliferation.
Synonyms:	CGI-142; HDGF-2; HDGF2; HRP-3
Note:	Immunogen Sequence Homology: Dog: 100%; Pig: 100%; Rat: 100%; Horse: 100%; Human: 100%; Mouse: 100%; Bovine: 100%; Rabbit: 100%; Guinea pig: 93%



[View online »](#)

Product images:



WB Suggested Anti-HDGFRP3 Antibody Titration:
0.2-1 ug/ml; Positive Control: Human Spleen