

Product datasheet for **TA345068**

GLOD4 Rabbit Polyclonal Antibody

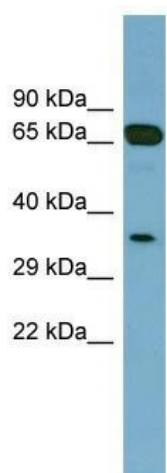
Product data:

Product Type:	Primary Antibodies
Applications:	WB
Recommended Dilution:	WB
Reactivity:	Human
Host:	Rabbit
Isotype:	IgG
Clonality:	Polyclonal
Immunogen:	The immunogen for anti-GLOD4 antibody: synthetic peptide directed towards the middle region of human GLOD4. Synthetic peptide located within the following region: LAVSDLQKSLNYWCNLLGMKIYEKDEEKQRALLGYADNQCCKLELQGVKGG
Formulation:	Liquid. Purified antibody supplied in 1x PBS buffer with 0.09% (w/v) sodium azide and 2% sucrose.
Purification:	Affinity Purified
Conjugation:	Unconjugated
Storage:	Store at -20°C as received.
Stability:	Stable for 12 months from date of receipt.
Predicted Protein Size:	33 kDa
Gene Name:	glyoxalase domain containing 4
Database Link:	NP_057164 Entrez Gene 51031 Human Q9HC38
Background:	The function of this protein remains unknown.
Synonyms:	C17orf25; CGI-150; HC71
Note:	Immunogen Sequence Homology: Human: 100%; Mouse: 100%; Rabbit: 100%; Dog: 93%; Rat: 93%; Horse: 93%; Bovine: 93%; Pig: 86%



[View online »](#)

Product images:



WB Suggested Anti-GLOD4 Antibody Titration:
0.2-1 ug/ml; ELISA Titer: 1:312500; Positive
Control: Human Placenta