

Product datasheet for **TA345066**

BRP44L (MPC1) Rabbit Polyclonal Antibody

Product data:

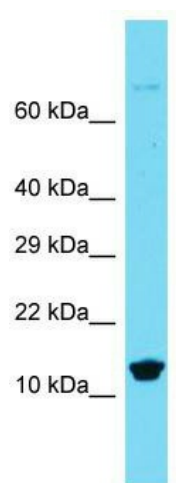
Product Type:	Primary Antibodies
Applications:	WB
Recommended Dilution:	WB
Reactivity:	Rat
Host:	Rabbit
Isotype:	IgG
Clonality:	Polyclonal
Immunogen:	The immunogen for Anti-Mpc1 antibody is: synthetic peptide directed towards the N-terminal region of Rat Mpc1. Synthetic peptide located within the following region: GALVRKAADYVRSKDFRDYLMSTHFWGPVANWGLPIAAINDMKKSPEIS
Formulation:	Liquid. Purified antibody supplied in 1x PBS buffer with 0.09% (w/v) sodium azide and 2% sucrose. <i>Note that this product is shipped as lyophilized powder to China customers.</i>
Purification:	Affinity Purified
Conjugation:	Unconjugated
Storage:	Store at -20°C as received.
Stability:	Stable for 12 months from date of receipt.
Predicted Protein Size:	11 kDa
Gene Name:	mitochondrial pyruvate carrier 1
Database Link:	NP_057182 Entrez Gene 171087 Rat Q9Y5U8
Background:	may be involved in apoptosis of neuronal cells [RGD, Feb 2006]. ##Evidence-Data-START## Transcript exon combination :: AF304429.1, BC097287.1 [ECO:0000332] RNAseq introns :: single sample supports all introns SRS388403, SRS388410 [ECO:0000348] ##Evidence-Data-END## ##RefSeq-Attributes-START## gene product(s) localized to mito. :: inferred from homology ##RefSeq-Attributes-END##
Synonyms:	BRP44L; CGI-129; dj68L15.3; MPYCD



[View online »](#)

Note: Immunogen Sequence Homology: Rat: 100%; Human: 100%; Mouse: 100%; Bovine: 100%; Yeast: 90%

Product images:



Host: Rabbit; Target Name: Mpc1; Sample Tissue: Rat Spleen lysates; Antibody Dilution: 1.0 ug/ml