

Product datasheet for **TA345064**

GOLGA7 Rabbit Polyclonal Antibody

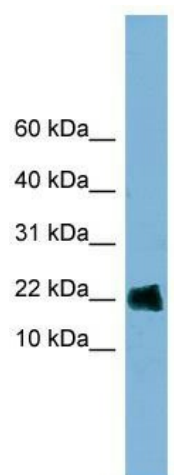
Product data:

Product Type:	Primary Antibodies
Applications:	WB
Recommended Dilution:	WB
Reactivity:	Human
Host:	Rabbit
Isotype:	IgG
Clonality:	Polyclonal
Immunogen:	The immunogen for anti-GOLGA7 antibody: synthetic peptide directed towards the middle region of human GOLGA7. Synthetic peptide located within the following region: ACTLAYTIFLCMETHYEKVLKKVSKYIQEQNEKIYAPQGLLLLTDPIERGL
Formulation:	Liquid. Purified antibody supplied in 1x PBS buffer with 0.09% (w/v) sodium azide and 2% sucrose. <i>Note that this product is shipped as lyophilized powder to China customers.</i>
Purification:	Affinity Purified
Conjugation:	Unconjugated
Storage:	Store at -20°C as received.
Stability:	Stable for 12 months from date of receipt.
Predicted Protein Size:	16 kDa
Gene Name:	golgin A7
Database Link:	NP_057183 Entrez Gene 51125 Human Q7Z5G4
Background:	GOLGA7 may be involved in protein transport from Golgi to cell surface. The ZDHHC9-GOLGA7 complex is a palmitoyltransferase specific for HRAS and NRAS.
Synonyms:	GCP16; GOLGA3AP1; GOLGA7A; HSPC041
Note:	Immunogen Sequence Homology: Dog: 100%; Pig: 100%; Rat: 100%; Horse: 100%; Human: 100%; Mouse: 100%; Bovine: 100%; Rabbit: 100%; Guinea pig: 100%; Zebrafish: 92%



[View online »](#)

Product images:



WB Suggested Anti-GOLGA7 Antibody Titration:
0.2-1 ug/ml; ELISA Titer: 1:312500; Positive
Control: HT1080 cell lysate