

Product datasheet for **TA345063**

RWDD1 Rabbit Polyclonal Antibody

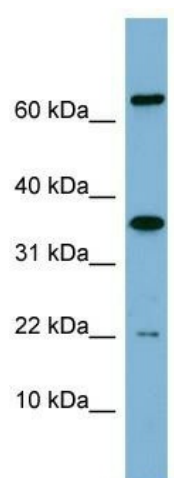
Product data:

Product Type:	Primary Antibodies
Applications:	WB
Recommended Dilution:	WB
Reactivity:	Human
Host:	Rabbit
Isotype:	IgG
Clonality:	Polyclonal
Immunogen:	The immunogen for anti-RWDD1 antibody: synthetic peptide directed towards the middle region of human RWDD1. Synthetic peptide located within the following region: KKRMKEEEQAGKNKLSGKQLFETDHNLDTSIQFLEDAGNNVEVDESLFQ
Formulation:	Liquid. Purified antibody supplied in 1x PBS buffer with 0.09% (w/v) sodium azide and 2% sucrose. <i>Note that this product is shipped as lyophilized powder to China customers.</i>
Purification:	Affinity Purified
Conjugation:	Unconjugated
Storage:	Store at -20°C as received.
Stability:	Stable for 12 months from date of receipt.
Predicted Protein Size:	17 kDa
Gene Name:	RWD domain containing 1
Database Link:	NP_057188 Entrez Gene 51389 Human Q9H446
Background:	Protects DRG2 from proteolytic degradation.
Synonyms:	CGI-24; PTD013
Note:	Immunogen Sequence Homology: Dog: 100%; Rat: 100%; Horse: 100%; Human: 100%; Mouse: 100%; Rabbit: 100%; Pig: 93%; Bovine: 93%; Guinea pig: 93%; Zebrafish: 79%



[View online »](#)

Product images:



WB Suggested Anti-RWDD1 Antibody Titration:
0.2-1 ug/ml; ELISA Titer: 1:1562500; Positive
Control: HeLa cell lysate RWDD1 is supported by
BioGPS gene expression data to be expressed in
HeLa