

## Product datasheet for **TA345061**

### TRAPPC4 Rabbit Polyclonal Antibody

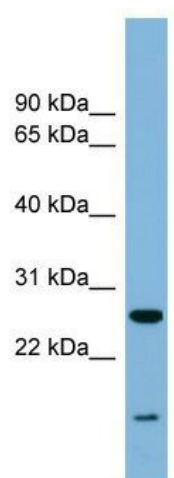
#### Product data:

Product Type:	Primary Antibodies
Applications:	WB
Recommended Dilution:	WB
Reactivity:	Human
Host:	Rabbit
Isotype:	IgG
Clonality:	Polyclonal
Immunogen:	The immunogen for anti-TRAPPC4 antibody: synthetic peptide directed towards the middle region of human TRAPPC4. Synthetic peptide located within the following region: EKLMLASMFHSLFAIGSQLSPEQGSSGIEMLETDTFKLHCYQTLTGKIFV
Formulation:	Liquid. Purified antibody supplied in 1x PBS buffer with 0.09% (w/v) sodium azide and 2% sucrose. <i>Note that this product is shipped as lyophilized powder to China customers.</i>
Purification:	Affinity Purified
Conjugation:	Unconjugated
Storage:	Store at -20°C as received.
Stability:	Stable for 12 months from date of receipt.
Predicted Protein Size:	24 kDa
Gene Name:	trafficking protein particle complex 4
Database Link:	<a href="#">NP_057230</a> <a href="#">Entrez Gene 51399 Human</a> <a href="#">Q9Y296</a>
Background:	May play a role in vesicular transport from endoplasmic reticulum to Golgi.
Synonyms:	CGI-104; HSPC172; PTD009; SBDN; SYNBINDIN; TRS23
Note:	Immunogen Sequence Homology: Dog: 100%; Pig: 100%; Rat: 100%; Horse: 100%; Human: 100%; Mouse: 100%; Bovine: 100%; Rabbit: 100%; Guinea pig: 100%; Zebrafish: 93%
Protein Families:	Druggable Genome



[View online »](#)

## Product images:



WB Suggested Anti-TRAPPC4 Antibody Titration:  
0.2-1 ug/ml; ELISA Titer: 1:312500; Positive  
Control: Human heart