

## Product datasheet for **TA345060**

### PPME1 Rabbit Polyclonal Antibody

#### Product data:

Product Type:	Primary Antibodies
Applications:	WB
Recommended Dilution:	WB
Reactivity:	Human
Host:	Rabbit
Isotype:	IgG
Clonality:	Polyclonal
Immunogen:	The immunogen for anti-PPME1 antibody: synthetic peptide directed towards the N terminal of human PPME1. Synthetic peptide located within the following region: MSALEKSMHLGRLPSRPPLPGSGGSQSGAKMRMGPRKRDFSPVPWSQYF
Formulation:	Liquid. Purified antibody supplied in 1x PBS buffer with 0.09% (w/v) sodium azide and 2% sucrose. <i>Note that this product is shipped as lyophilized powder to China customers.</i>
Purification:	Affinity Purified
Conjugation:	Unconjugated
Storage:	Store at -20°C as received.
Stability:	Stable for 12 months from date of receipt.
Predicted Protein Size:	42 kDa
Gene Name:	protein phosphatase methylesterase 1
Database Link:	<a href="#">NP_057231</a> <a href="#">Entrez Gene 51400 Human</a> <a href="#">Q9Y570</a>
Background:	This gene encodes a protein phosphatase methylesterase localized to the nucleus. The encoded protein acts on the protein phosphatase-2A catalytic subunit and supports the ERK pathway through dephosphorylation of regulatory proteins. It plays a role in malignant glioma progression. Alternative splicing results in multiple transcript variants. [provided by RefSeq, Oct 2012]
Synonyms:	PME-1

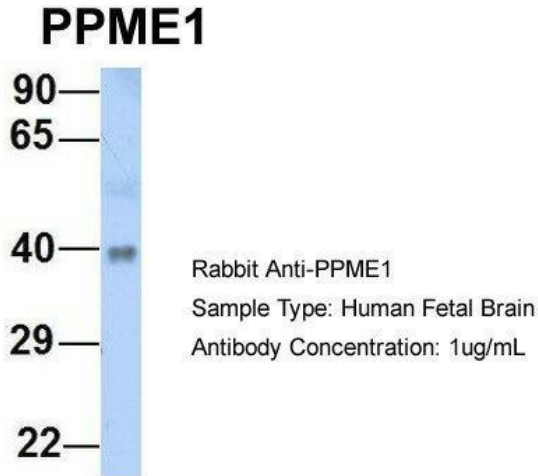


[View online »](#)

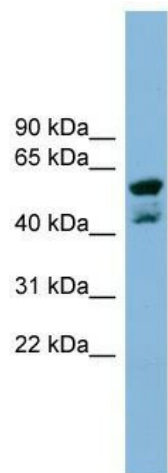
**Note:** Immunogen Sequence Homology: Dog: 100%; Rat: 100%; Human: 100%; Mouse: 100%; Bovine: 100%

**Protein Families:** Druggable Genome

**Product images:**



Host: Rabbit; Target Name: PPME1; Sample Tissue: Human Fetal Brain; Antibody Dilution: 1.0 ug/ml



WB Suggested Anti-PPME1 Antibody Titration: 0.2-1 ug/ml; ELISA Titer: 1:1562500; Positive Control: NCI-H226 cell lysate. PPME1 is strongly supported by BioGPS gene expression data to be expressed in NCI-H226