

Product datasheet for **TA345056**

VPS28 Rabbit Polyclonal Antibody

Product data:

Product Type:	Primary Antibodies
Applications:	WB
Recommended Dilution:	WB
Reactivity:	Human, Mouse
Host:	Rabbit
Isotype:	IgG
Clonality:	Polyclonal
Immunogen:	The immunogen for anti-VPS28 antibody: synthetic peptide directed towards the N terminal of human VPS28. Synthetic peptide located within the following region: MFHGIPATPGIGAPGNKPELYEEVKLYKNAREREKYDNMAELFAVVKTMQ
Formulation:	Liquid. Purified antibody supplied in 1x PBS buffer with 0.09% (w/v) sodium azide and 2% sucrose. <i>Note that this product is shipped as lyophilized powder to China customers.</i>
Purification:	Affinity Purified
Conjugation:	Unconjugated
Storage:	Store at -20°C as received.
Stability:	Stable for 12 months from date of receipt.
Predicted Protein Size:	25 kDa
Gene Name:	VPS28, ESCRT-I subunit
Database Link:	NP_057292 Entrez Gene 66914 Mouse Entrez Gene 51160 Human Q9UK41
Background:	This gene encodes a protein subunit of the ESCRT-I complex (endosomal complexes required for transport), which functions in the transport and sorting of proteins into subcellular vesicles. This complex can also be hijacked to facilitate the budding of enveloped viruses from the cell membrane. Alternative splicing results in multiple transcript variants encoding different isoforms. [provided by RefSeq, Jul 2013]
Synonyms:	MGC60323

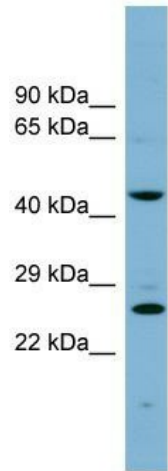


[View online »](#)

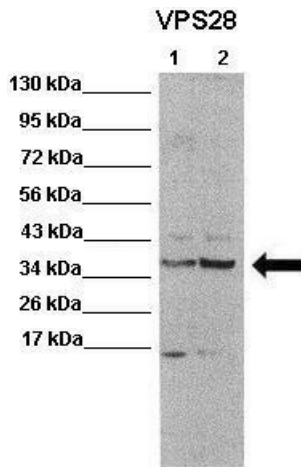
Note: Immunogen Sequence Homology: Dog: 100%; Pig: 100%; Rat: 100%; Horse: 100%; Human: 100%; Mouse: 100%; Bovine: 100%; Rabbit: 100%; Zebrafish: 100%; Guinea pig: 100%

Protein Pathways: Endocytosis

Product images:



WB Suggested Anti-VPS28 Antibody Titration: 0.2-1 ug/ml; ELISA Titer: 1:1562500; Positive Control: Human Liver



WB Suggested Anti-VPS28 Antibody ; Positive Control: Lane 1: 20ug mouse brain extract Lane 2: 20ug mouse brain extract; Primary Antibody Dilution : 1:500; Secondary Antibody : Anti rabbit-HRP; Secondary Antibody Dilution : 1:5,000; Submitted by: Scott Wils