

## Product datasheet for **TA345055**

### TRAPPC2L Rabbit Polyclonal Antibody

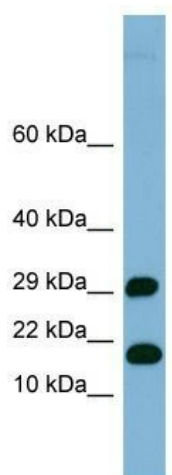
#### Product data:

Product Type:	Primary Antibodies
Applications:	WB
Recommended Dilution:	WB
Reactivity:	Human
Host:	Rabbit
Isotype:	IgG
Clonality:	Polyclonal
Immunogen:	The immunogen for anti-TRAPPC2L antibody: synthetic peptide directed towards the N terminal of human TRAPPC2L. Synthetic peptide located within the following region: MAVCIAVIAKENYPLYIRSTPTENELKFHYMVHTSLDVVDEKISAMGKAL
Formulation:	Liquid. Purified antibody supplied in 1x PBS buffer with 0.09% (w/v) sodium azide and 2% sucrose. <i>Note that this product is shipped as lyophilized powder to China customers.</i>
Purification:	Affinity Purified
Conjugation:	Unconjugated
Storage:	Store at -20°C as received.
Stability:	Stable for 12 months from date of receipt.
Predicted Protein Size:	16 kDa
Gene Name:	trafficking protein particle complex 2-like
Database Link:	<a href="#">NP_057293</a> <a href="#">Entrez Gene 51693 Human</a> <a href="#">Q9UL33</a>
Background:	TRAPPC2L may play a role in vesicular transport from endoplasmic reticulum to Golgi.
Synonyms:	HSPC176
Note:	Immunogen Sequence Homology: Rat: 100%; Human: 100%; Mouse: 100%; Dog: 93%; Pig: 93%; Horse: 93%; Bovine: 93%; Guinea pig: 93%; Zebrafish: 86%



[View online »](#)

## Product images:



WB Suggested Anti-TRAPPC2L Antibody Titration:  
0.2-1 ug/ml; ELISA Titer: 1:1562500; Positive  
Control: Human heart