

Product datasheet for **TA345054**

HECA Rabbit Polyclonal Antibody

Product data:

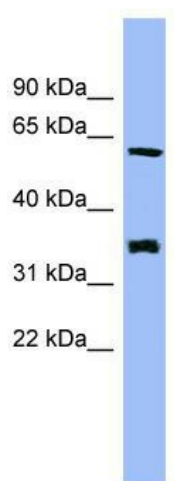
Product Type:	Primary Antibodies
Applications:	WB
Recommended Dilution:	WB
Reactivity:	Human
Host:	Rabbit
Isotype:	IgG
Clonality:	Polyclonal
Immunogen:	The immunogen for anti-HECA antibody: synthetic peptide directed towards the middle region of human HECA. Synthetic peptide located within the following region: HKLNTFHVRMEDDAQVGQGEDLRKFILAALSASHRNVVNCALCHRALPVF
Formulation:	Liquid. Purified antibody supplied in 1x PBS buffer with 0.09% (w/v) sodium azide and 2% sucrose. <i>Note that this product is shipped as lyophilized powder to China customers.</i>
Purification:	Affinity Purified
Conjugation:	Unconjugated
Storage:	Store at -20°C as received.
Stability:	Stable for 12 months from date of receipt.
Predicted Protein Size:	59 kDa
Gene Name:	hdc homolog, cell cycle regulator
Database Link:	NP_057301 Entrez Gene 51696 Human Q9UBI9
Background:	This gene encodes the homolog of the Drosophila headcase protein, a highly basic, cytoplasmic protein that regulates the re-entry of imaginal cells into the mitotic cycle during adult morphogenesis. In Drosophila, the encoded protein also inhibits terminal branching of neighboring cells during tracheal development. [provided by RefSeq, Jul 2008]
Synonyms:	dj225E12.1; HDC; HDCL; HHDC



[View online »](#)

Note: Immunogen Sequence Homology: Rat: 100%; Human: 100%; Mouse: 100%; Rabbit: 100%; Dog: 93%; Pig: 93%; Horse: 93%; Bovine: 93%; Zebrafish: 93%; Guinea pig: 86%

Product images:



WB Suggested Anti-HECA Antibody Titration: 0.2-1 ug/ml; Positive Control: PANC1 cell lysate