

## Product datasheet for **TA345052**

### VPS29 Rabbit Polyclonal Antibody

#### Product data:

Product Type:	Primary Antibodies
Applications:	WB
Recommended Dilution:	WB
Reactivity:	Human
Host:	Rabbit
Isotype:	IgG
Clonality:	Polyclonal
Immunogen:	The immunogen for anti-VPS29 antibody: synthetic peptide directed towards the N terminal of human VPS29. Synthetic peptide located within the following region: LCTGNLCTKESYDYLKTLAGDVHIVRGDFDENLNYPEQKVVTVGQFKIGL
Formulation:	Liquid. Purified antibody supplied in 1x PBS buffer with 0.09% (w/v) sodium azide and 2% sucrose. <i>Note that this product is shipped as lyophilized powder to China customers.</i>
Purification:	Affinity Purified
Conjugation:	Unconjugated
Storage:	Store at -20°C as received.
Stability:	Stable for 12 months from date of receipt.
Predicted Protein Size:	20 kDa
Gene Name:	VPS29 retromer complex component
Database Link:	<a href="#">NP_057310</a> <a href="#">Entrez Gene 51699 Human</a> <a href="#">Q9UBQ0</a>



[View online »](#)

**Background:**

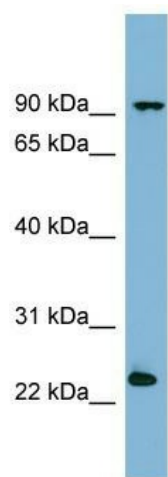
This gene belongs to a group of vacuolar protein sorting (VPS) genes that, when functionally impaired, disrupt the efficient delivery of vacuolar hydrolases. The protein encoded by this gene is a component of a large multimeric complex, termed the retromer complex, which is involved in retrograde transport of proteins from endosomes to the trans-Golgi network. This VPS protein may be involved in the formation of the inner shell of the retromer coat for retrograde vesicles leaving the prevacuolar compartment. Alternative splice variants encoding different isoforms and representing non-protein coding transcripts have been found for this gene. [provided by RefSeq, Aug 2013]

**Synonyms:**

DC7; DC15; PEP11

**Note:**

Immunogen Sequence Homology: Dog: 100%; Pig: 100%; Rat: 100%; Horse: 100%; Human: 100%; Mouse: 100%; Bovine: 100%; Rabbit: 100%; Zebrafish: 100%; Guinea pig: 100%

**Product images:**

WB Suggested Anti-VPS29 Antibody Titration: 0.2-1 ug/ml; Positive Control: ACHN cell lysate