

Product datasheet for **TA345047**

epsilon Tubulin (TUBE1) Rabbit Polyclonal Antibody

Product data:

| | |
|-------------------------|---|
| Product Type: | Primary Antibodies |
| Applications: | WB |
| Recommended Dilution: | WB |
| Reactivity: | Human |
| Host: | Rabbit |
| Isotype: | IgG |
| Clonality: | Polyclonal |
| Immunogen: | The immunogen for anti-TUBE1 antibody: synthetic peptide directed towards the middle region of human TUBE1. Synthetic peptide located within the following region: PSGEDDVITSPYNSILAMKELNEHADCVLPIDNQSLFDIISKIDLMVNSG |
| Formulation: | Liquid. Purified antibody supplied in 1x PBS buffer with 0.09% (w/v) sodium azide and 2% sucrose. <i>Note that this product is shipped as lyophilized powder to China customers.</i> |
| Purification: | Affinity Purified |
| Conjugation: | Unconjugated |
| Storage: | Store at -20°C as received. |
| Stability: | Stable for 12 months from date of receipt. |
| Predicted Protein Size: | 53 kDa |
| Gene Name: | tubulin epsilon 1 |
| Database Link: | NP_057346 Entrez Gene 51175 Human Q9UJT0 |
| Background: | This gene encodes a member of the tubulin superfamily. This protein localizes to the centriolar sub-distal appendages that are associated with the older of the two centrioles after centrosome duplication. This protein plays a central role in organization of the microtubules during centriole duplication. A pseudogene of this gene is found on chromosome 5. [provided by RefSeq, Jan 2009] |
| Synonyms: | dj142L7.2; TUBE |

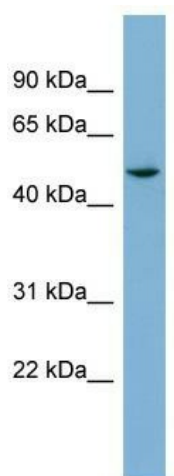


[View online »](#)

Note: Immunogen Sequence Homology: Dog: 100%; Pig: 100%; Horse: 100%; Human: 100%; Bovine: 100%; Rabbit: 100%; Guinea pig: 100%; Rat: 93%; Mouse: 93%; Zebrafish: 93%

Protein Families: Druggable Genome

Product images:



WB Suggested Anti-TUBE1 Antibody Titration: 0.2-1 ug/ml; ELISA Titer: 1:1562500; Positive Control: MCF7 cell lysate