

Product datasheet for **TA345046**

epsilon Tubulin (TUBE1) Rabbit Polyclonal Antibody

Product data:

Product Type:	Primary Antibodies
Applications:	IHC, WB
Recommended Dilution:	WB, IHC
Reactivity:	Drosophila, Human
Host:	Rabbit
Isotype:	IgG
Clonality:	Polyclonal
Immunogen:	The immunogen for anti-TUBE1 antibody: synthetic peptide directed towards the middle region of human TUBE1. Synthetic peptide located within the following region: HLHHYLQVEGMEESCFTEAVSSLSALIQEYDQLDATKNMPVQDLPRLSIA
Formulation:	Liquid. Purified antibody supplied in 1x PBS buffer with 0.09% (w/v) sodium azide and 2% sucrose. <i>Note that this product is shipped as lyophilized powder to China customers.</i>
Purification:	Affinity Purified
Conjugation:	Unconjugated
Storage:	Store at -20°C as received.
Stability:	Stable for 12 months from date of receipt.
Predicted Protein Size:	53 kDa
Gene Name:	tubulin epsilon 1
Database Link:	NP_057346 Entrez Gene 51175 Human Q9UJT0
Background:	This gene encodes a member of the tubulin superfamily. This protein localizes to the centriolar sub-distal appendages that are associated with the older of the two centrioles after centrosome duplication. This protein plays a central role in organization of the microtubules during centriole duplication. A pseudogene of this gene is found on chromosome 5. [provided by RefSeq, Jan 2009]
Synonyms:	dj142L7.2; TUBE

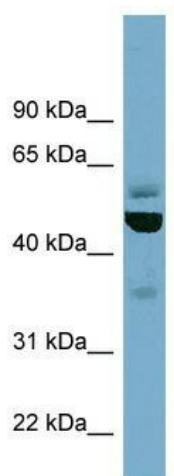


[View online »](#)

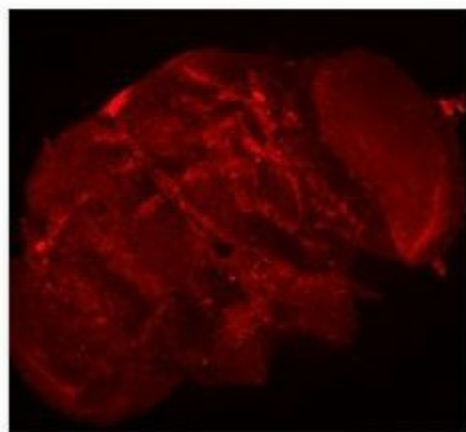
Note: Immunogen Sequence Homology: Pig: 100%; Rat: 100%; Human: 100%; Mouse: 100%; Guinea pig: 100%; Rabbit: 93%; Horse: 86%; Dog: 85%

Protein Families: Druggable Genome

Product images:



WB Suggested Anti-TUBE1 Antibody Titration: 0.2-1 ug/ml; ELISA Titer: 1:312500; Positive Control: HeLa cell lysate



Drosophila Melanogaster brain