

## Product datasheet for **TA345044**

### RAB23 Rabbit Polyclonal Antibody

#### Product data:

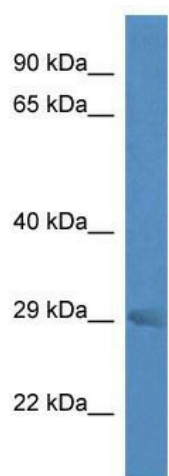
Product Type:	Primary Antibodies
Applications:	WB
Recommended Dilution:	WB
Reactivity:	Mouse
Host:	Rabbit
Isotype:	IgG
Clonality:	Polyclonal
Immunogen:	The immunogen for anti-Rab23 antibody: synthetic peptide corresponding to a region of Mouse. Synthetic peptide located within the following region: DPEQTHSSSNKIGVFNASVRSHLGQNSSSLNGGDVINLRPNKQRTKRTRN
Formulation:	Liquid. Purified antibody supplied in 1x PBS buffer with 0.09% (w/v) sodium azide and 2% sucrose. <i>Note that this product is shipped as lyophilized powder to China customers.</i>
Purification:	Affinity Purified
Conjugation:	Unconjugated
Storage:	Store at -20°C as received.
Stability:	Stable for 12 months from date of receipt.
Predicted Protein Size:	26 kDa
Gene Name:	RAB23, member RAS oncogene family
Database Link:	<a href="#">NP_057361</a> <a href="#">Entrez Gene 19335 Mouse</a> <a href="#">Q9ULC3</a>
Background:	The function remains unknown.
Synonyms:	HSPC137
Note:	Immunogen Sequence Homology: Dog: 100%; Rat: 100%; Horse: 100%; Human: 100%; Mouse: 100%; Rabbit: 100%; Pig: 93%; Bovine: 93%; Guinea pig: 93%; Zebrafish: 79%
Protein Families:	Druggable Genome



[View online »](#)

Protein Pathways: Hedgehog signaling pathway

### Product images:



WB Suggested Anti-Rab23 Antibody; Titration: 1.0 ug/ml; Positive Control: Mouse Brain