

Product datasheet for **TA345042**

HP1BP3 Rabbit Polyclonal Antibody

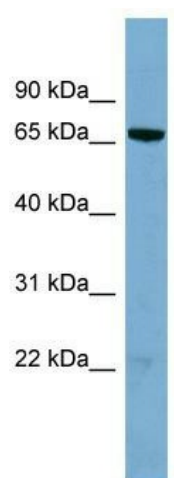
Product data:

Product Type:	Primary Antibodies
Applications:	WB
Recommended Dilution:	WB
Reactivity:	Human
Host:	Rabbit
Isotype:	IgG
Clonality:	Polyclonal
Immunogen:	The immunogen for anti-HP1BP3 antibody: synthetic peptide directed towards the N terminal of human HP1BP3. Synthetic peptide located within the following region: SEESVSTVEEQENETPPATSSEAEQPKGEPENEEKEENKSSEETKKDEKD
Formulation:	Liquid. Purified antibody supplied in 1x PBS buffer with 0.09% (w/v) sodium azide and 2% sucrose. <i>Note that this product is shipped as lyophilized powder to China customers.</i>
Purification:	Affinity Purified
Conjugation:	Unconjugated
Storage:	Store at -20°C as received.
Stability:	Stable for 12 months from date of receipt.
Predicted Protein Size:	61 kDa
Gene Name:	heterochromatin protein 1 binding protein 3
Database Link:	NP_057371 Entrez Gene 50809 Human Q5SSJ5
Background:	HP1BP3 is the component of heterochromatin, may be involved in chromatin structure and function.
Synonyms:	HP1-BP74; HP1BP74
Note:	Immunogen Sequence Homology: Dog: 100%; Pig: 100%; Rat: 100%; Horse: 100%; Human: 100%; Mouse: 100%; Bovine: 100%; Rabbit: 100%; Guinea pig: 93%



[View online »](#)

Product images:



WB Suggested Anti-HP1BP3 Antibody Titration:
0.2-1 ug/ml; ELISA Titer: 1:312500; Positive
Control: Jurkat cell lysate HP1BP3 is supported by
BioGPS gene expression data to be expressed in
Jurkat