

## Product datasheet for **TA345041**

### HP1BP3 Rabbit Polyclonal Antibody

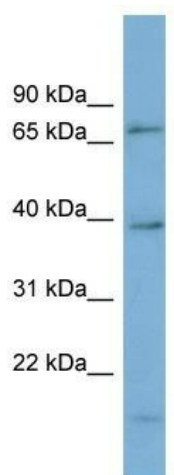
#### Product data:

Product Type:	Primary Antibodies
Applications:	WB
Recommended Dilution:	WB
Reactivity:	Human
Host:	Rabbit
Isotype:	IgG
Clonality:	Polyclonal
Immunogen:	The immunogen for anti-HP1BP3 antibody: synthetic peptide directed towards the middle region of human HP1BP3. Synthetic peptide located within the following region: QYYPKLRVDIRPQLLKNALQRAVERGQLEQITGKGASGTFQLKKSGEKPL
Formulation:	Liquid. Purified antibody supplied in 1x PBS buffer with 0.09% (w/v) sodium azide and 2% sucrose. <i>Note that this product is shipped as lyophilized powder to China customers.</i>
Purification:	Affinity Purified
Conjugation:	Unconjugated
Storage:	Store at -20°C as received.
Stability:	Stable for 12 months from date of receipt.
Predicted Protein Size:	61 kDa
Gene Name:	heterochromatin protein 1 binding protein 3
Database Link:	<a href="#">NP_057371</a> <a href="#">Entrez Gene 50809 Human</a> <a href="#">Q5SSJ5</a>
Background:	HP1BP3 is the component of heterochromatin, may be involved in chromatin structure and function.
Synonyms:	HP1-BP74; HP1BP74
Note:	Immunogen Sequence Homology: Dog: 100%; Pig: 100%; Rat: 100%; Horse: 100%; Human: 100%; Mouse: 100%; Bovine: 100%; Rabbit: 100%; Guinea pig: 100%; Zebrafish: 86%



[View online »](#)

Product images:



WB Suggested Anti-HP1BP3 Antibody Titration:  
0.2-1 ug/ml; ELISA Titer: 1:62500; Positive Control:  
Human brain