

Product datasheet for **TA345040**

CAB39 Rabbit Polyclonal Antibody

Product data:

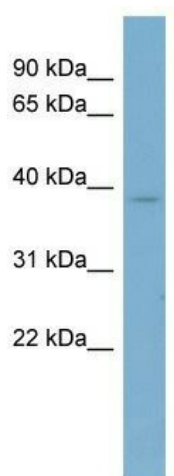
Product Type:	Primary Antibodies
Applications:	WB
Recommended Dilution:	WB
Reactivity:	Human
Host:	Rabbit
Isotype:	IgG
Clonality:	Polyclonal
Immunogen:	The immunogen for anti-CAB39 antibody: synthetic peptide directed towards the middle region of human CAB39. Synthetic peptide located within the following region: KTQPILDILLKNQAKLIEFLSKFQNDRTEDQFNDEKTYLVKQIRD LKRP
Formulation:	Liquid. Purified antibody supplied in 1x PBS buffer with 0.09% (w/v) sodium azide and 2% sucrose. <i>Note that this product is shipped as lyophilized powder to China customers.</i>
Purification:	Affinity Purified
Conjugation:	Unconjugated
Storage:	Store at -20°C as received.
Stability:	Stable for 12 months from date of receipt.
Predicted Protein Size:	40 kDa
Gene Name:	calcium binding protein 39
Database Link:	NP_057373 Entrez Gene 51719 Human Q9Y376
Background:	Together with the STE20-related adaptor-alpha (STRAD alpha) pseudo kinase, CAB39 forms a regulatory complex capable of stimulating the activity of STK11.
Synonyms:	CGI-66; MO25
Note:	Immunogen Sequence Homology: Dog: 100%; Pig: 100%; Rat: 100%; Horse: 100%; Human: 100%; Mouse: 100%; Bovine: 100%; Rabbit: 100%; Guinea pig: 100%; Zebrafish: 86%; Yeast: 79%



[View online »](#)

Protein Pathways: mTOR signaling pathway

Product images:



WB Suggested Anti-CAB39 Antibody Titration: 0.2-1 ug/ml; ELISA Titer: 1:62500; Positive Control: Human Liver