

Product datasheet for **TA345039**

BIN2 Rabbit Polyclonal Antibody

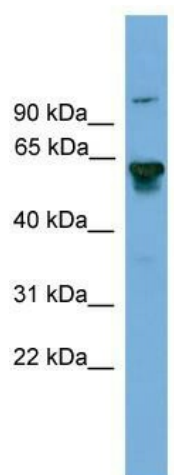
Product data:

Product Type:	Primary Antibodies
Applications:	WB
Recommended Dilution:	WB
Reactivity:	Human
Host:	Rabbit
Isotype:	IgG
Clonality:	Polyclonal
Immunogen:	The immunogen for anti-BIN2 antibody: synthetic peptide directed towards the middle region of human BIN2. Synthetic peptide located within the following region: EEVLPSSTTPSPGGALSPSGQPSSSATEVLRTRTASEGSEQPKKRASIQ
Formulation:	Liquid. Purified antibody supplied in 1x PBS buffer with 0.09% (w/v) sodium azide and 2% sucrose. <i>Note that this product is shipped as lyophilized powder to China customers.</i>
Purification:	Affinity Purified
Conjugation:	Unconjugated
Storage:	Store at -20°C as received.
Stability:	Stable for 12 months from date of receipt.
Predicted Protein Size:	62 kDa
Gene Name:	bridging integrator 2
Database Link:	NP_057377 Entrez Gene 51411 Human Q9UBW5
Background:	The function of BIN2 remains unknown.
Synonyms:	BRAP-1
Note:	Immunogen Sequence Homology: Human: 100%; Dog: 93%; Horse: 93%; Pig: 86%; Bovine: 79%; Rabbit: 79%; Rat: 77%



[View online »](#)

Product images:



WB Suggested Anti-BIN2 Antibody Titration: 0.2-1 ug/ml; ELISA Titer: 1:312500; Positive Control: Human heart