

Product datasheet for **TA345038**

CRBN Rabbit Polyclonal Antibody

Product data:

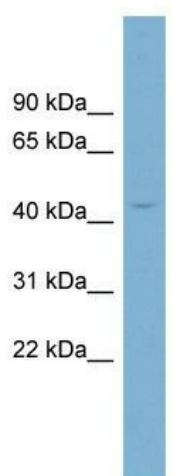
Product Type:	Primary Antibodies
Applications:	WB
Recommended Dilution:	WB
Reactivity:	Human
Host:	Rabbit
Isotype:	IgG
Clonality:	Polyclonal
Immunogen:	The immunogen for anti-CRBN antibody: synthetic peptide directed towards the N terminal of human CRBN. Synthetic peptide located within the following region: DQDSKEAKKPNIIINFDTSLPTSHTYLGADMEEFHGRTLHDDDDSCQVIPVL
Formulation:	Liquid. Purified antibody supplied in 1x PBS buffer with 0.09% (w/v) sodium azide and 2% sucrose. <i>Note that this product is shipped as lyophilized powder to China customers.</i>
Purification:	Affinity Purified
Conjugation:	Unconjugated
Storage:	Store at -20°C as received.
Stability:	Stable for 12 months from date of receipt.
Predicted Protein Size:	50 kDa
Gene Name:	cereblon
Database Link:	NP_057386 Entrez Gene 51185 Human Q96SW2
Background:	This gene encodes a protein related to the Lon protease protein family. In rodents and other mammals this gene product is found in the cytoplasm localized with a calcium channel membrane protein, and is thought to play a role in brain development. Mutatio
Synonyms:	MRT2; MRT2A
Note:	Immunogen Sequence Homology: Pig: 100%; Rat: 100%; Horse: 100%; Human: 100%; Mouse: 100%; Bovine: 100%; Rabbit: 100%; Guinea pig: 100%; Zebrafish: 93%



[View online »](#)

Protein Families: Protease

Product images:



WB Suggested Anti-CRBN Antibody Titration: 0.2-1 ug/ml; Positive Control: COLO205 cell lysate