

## Product datasheet for **TA345037**

### C15orf15 (RSL24D1) Rabbit Polyclonal Antibody

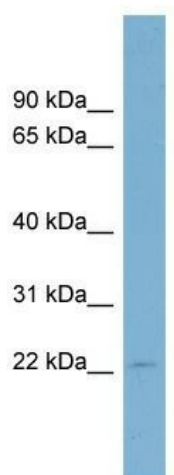
#### Product data:

Product Type:	Primary Antibodies
Applications:	WB
Recommended Dilution:	WB
Reactivity:	Human
Host:	Rabbit
Isotype:	IgG
Clonality:	Polyclonal
Immunogen:	The immunogen for anti-C15orf15 antibody: synthetic peptide directed towards the middle region of human C15orf15. Synthetic peptide located within the following region: KCHKNFKKRNPRKVRWTKAFRKAAGKELTVDNSFEFEKRRNEPIKYQRE
Formulation:	Liquid. Purified antibody supplied in 1x PBS buffer with 0.09% (w/v) sodium azide and 2% sucrose. <i>Note that this product is shipped as lyophilized powder to China customers.</i>
Purification:	Affinity Purified
Conjugation:	Unconjugated
Storage:	Store at -20°C as received.
Stability:	Stable for 12 months from date of receipt.
Predicted Protein Size:	19 kDa
Gene Name:	ribosomal L24 domain containing 1
Database Link:	<a href="#">NP_057388</a> <a href="#">Entrez Gene 51187 Human</a> <a href="#">Q9UHA3</a>
Background:	The function of this protein remains unknown.
Synonyms:	C15orf15; HRP-L30-iso; L30; RLP24; RPL24; RPL24L; TVAS3
Note:	Immunogen Sequence Homology: Human: 100%; Dog: 93%; Pig: 93%; Rat: 93%; Horse: 93%; Mouse: 93%; Bovine: 93%; Rabbit: 93%; Guinea pig: 93%; Zebrafish: 83%; Yeast: 75%
Protein Pathways:	Ribosome



[View online »](#)

Product images:



WB Suggested Anti-C15orf15 Antibody Titration:  
0.2-1 ug/ml; Positive Control: OVCAR-3 cell lysate