

Product datasheet for **TA345033**

DCDC2 Rabbit Polyclonal Antibody

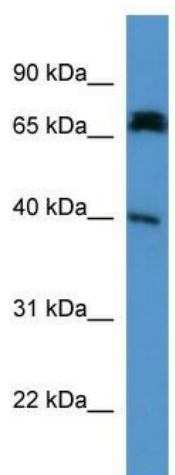
Product data:

Product Type:	Primary Antibodies
Applications:	WB
Recommended Dilution:	WB
Reactivity:	Mouse
Host:	Rabbit
Isotype:	IgG
Clonality:	Polyclonal
Immunogen:	The immunogen for anti-Dcdc2a antibody: synthetic peptide corresponding to a region of Mouse. Synthetic peptide located within the following region: QIESGGNYVAGGPEAFKKNLYLDIGEIKKRPMEAVNTEVKPVIHSRINVS
Formulation:	Liquid. Purified antibody supplied in 1x PBS buffer with 0.09% (w/v) sodium azide and 2% sucrose. <i>Note that this product is shipped as lyophilized powder to China customers.</i>
Purification:	Affinity Purified
Conjugation:	Unconjugated
Storage:	Store at -20°C as received.
Stability:	Stable for 12 months from date of receipt.
Predicted Protein Size:	40 kDa
Gene Name:	doublecortin domain containing 2
Database Link:	NP_057440 Entrez Gene 51473 Human Q9UHG0
Background:	This gene encodes a member of the doublecortin family. The protein encoded by this gene contains two doublecortin domains. The doublecortin domain has been demonstrated to bind tubulin and enhance microtubule polymerization.
Synonyms:	DCDC2A; NPHP19; RU2; RU2S
Note:	Immunogen Sequence Homology: Rat: 100%; Horse: 100%; Human: 100%; Mouse: 100%; Bovine: 100%; Dog: 93%; Pig: 93%; Guinea pig: 93%; Rabbit: 86%



[View online »](#)

Product images:



WB Suggested Anti-Dcdc2a Antibody Titration:
0.2-1 ug/ml; ELISA Titer: 1:1562500; Positive
Control: Mouse Brain