

Product datasheet for **TA345032**

DCDC2 Rabbit Polyclonal Antibody

Product data:

Product Type:	Primary Antibodies
Applications:	WB
Recommended Dilution:	WB
Reactivity:	Human, Mouse
Host:	Rabbit
Isotype:	IgG
Clonality:	Polyclonal
Immunogen:	The immunogen for anti-DCDC2 antibody: synthetic peptide directed towards the middle region of human DCDC2. Synthetic peptide located within the following region: KGSNDRHSKSTVGSSDNSSPQLKRKGKKEDVNSEKLTCLKQNVKLNKNS
Formulation:	Liquid. Purified antibody supplied in 1x PBS buffer with 0.09% (w/v) sodium azide and 2% sucrose. <i>Note that this product is shipped as lyophilized powder to China customers.</i>
Purification:	Affinity Purified
Conjugation:	Unconjugated
Storage:	Store at -20°C as received.
Stability:	Stable for 12 months from date of receipt.
Predicted Protein Size:	53
Gene Name:	doublecortin domain containing 2
Database Link:	NP_057440 Entrez Gene 51473 Human Q9UHG0
Background:	This gene encodes a member of the doublecortin family. The protein encoded by this gene contains two doublecortin domains. The doublecortin domain has been demonstrated to bind tubulin and enhance microtubule polymerization. Mutations in this gene have been associated with Reading Disability (RD), also referred to as developmental dyslexia. Alternatively spliced transcript variants encoding the same protein have been found for this gene.

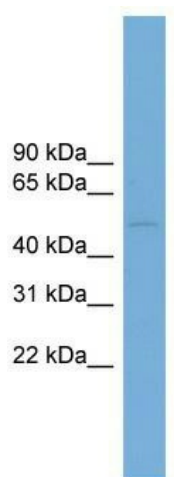


[View online »](#)

Synonyms: DCDC2A; NPHP19; RU2; RU2S

Note: Immunogen Sequence Homology: Pig: 100%; Rat: 100%; Human: 100%; Mouse: 100%; Rabbit: 100%; Guinea pig: 100%; Horse: 93%; Bovine: 93%; Dog: 79%

Product images:



WB Suggested Anti-DCDC2 Antibody Titration:
0.2-1 ug/ml; ELISA Titer: 1:312500; Positive
Control: Hela cell lysate