

Product datasheet for **TA345031**

RAB9B Rabbit Polyclonal Antibody

Product data:

Product Type:	Primary Antibodies
Applications:	WB
Recommended Dilution:	WB
Reactivity:	Human
Host:	Rabbit
Isotype:	IgG
Clonality:	Polyclonal
Immunogen:	The immunogen for anti-RAB9B antibody: synthetic peptide directed towards the N terminal of human RAB9B. Synthetic peptide located within the following region: KSSLMNRYVTNKFDSQAFHTIGVEFLNRDLEVDGRFVTLQIWDTAGQERF
Formulation:	Liquid. Purified antibody supplied in 1x PBS buffer with 0.09% (w/v) sodium azide and 2% sucrose. <i>Note that this product is shipped as lyophilized powder to China customers.</i>
Purification:	Affinity Purified
Conjugation:	Unconjugated
Storage:	Store at -20°C as received.
Stability:	Stable for 12 months from date of receipt.
Predicted Protein Size:	23 kDa
Gene Name:	RAB9B, member RAS oncogene family
Database Link:	NP_057454 Entrez Gene 51209 Human Q9NP90
Background:	This gene encodes a member of a subfamily of RAS small guanosine triphosphate (GTP)-binding proteins that regulate membrane trafficking. The encoded protein may be involved in endosome-to-Golgi transport.
Synonyms:	Rab-9L; RAB9L

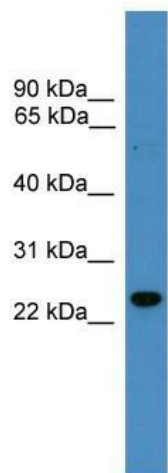


[View online »](#)

Note: Immunogen Sequence Homology: Dog: 100%; Pig: 100%; Rat: 100%; Horse: 100%; Human: 100%; Mouse: 100%; Bovine: 100%; Rabbit: 100%; Guinea pig: 100%; Zebrafish: 86%; Sheep: 79%

Protein Families: Druggable Genome

Product images:



WB Suggested Anti-RAB9B Antibody Titration: 0.2-1 ug/ml; ELISA Titer: 1:1562500; Positive Control: U937 cell lysate