

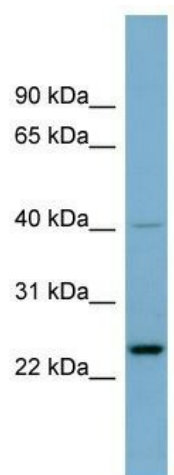
Product datasheet for **TA345030**

HSPC111 (NOP16) Rabbit Polyclonal Antibody

Product data:

Product Type:	Primary Antibodies
Applications:	WB
Recommended Dilution:	WB
Reactivity:	Human
Host:	Rabbit
Isotype:	IgG
Clonality:	Polyclonal
Immunogen:	The immunogen for anti-HSPC111 antibody: synthetic peptide directed towards the middle region of human HSPC111. Synthetic peptide located within the following region: RKVKAMEVDIEERPKELVLRKPYVLNDLEAEASLPEKKGNTLSRDLIDYVR
Formulation:	Liquid. Purified antibody supplied in 1x PBS buffer with 0.09% (w/v) sodium azide and 2% sucrose.
Purification:	Affinity Purified
Conjugation:	Unconjugated
Storage:	Store at -20°C as received.
Stability:	Stable for 12 months from date of receipt.
Predicted Protein Size:	21 kDa
Gene Name:	NOP16 nucleolar protein
Database Link:	NP_057475 Entrez Gene 51491 Human Q9Y3C1
Background:	NOP16 is transcriptionally regulated by c-Myc (MYC; MIM 190080), upregulated in breast cancer, and overexpression is associated with poor patient survival (Butt et al., 2008).
Synonyms:	HSPC111; HSPC185
Note:	Immunogen Sequence Homology: Dog: 100%; Pig: 100%; Rat: 100%; Horse: 100%; Human: 100%; Mouse: 100%; Bovine: 100%; Rabbit: 100%; Guinea pig: 100%
Protein Families:	Druggable Genome


[View online »](#)

Product images:

WB Suggested Anti-HSPC111 Antibody Titration:
0.2-1 ug/ml; ELISA Titer: 1:312500; Positive
Control: 721_B cell lysateNOP16 is strongly
supported by BioGPS gene expression data to be
expressed in Human 721_B cells