

## Product datasheet for **TA345028**

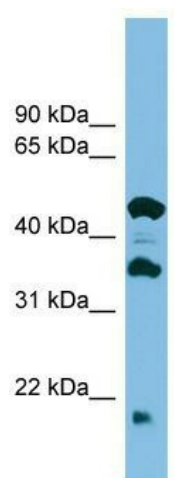
### C11orf73 (HIKESHI) Rabbit Polyclonal Antibody

#### Product data:

Product Type:	Primary Antibodies
Applications:	WB
Recommended Dilution:	WB
Reactivity:	Human
Host:	Rabbit
Isotype:	IgG
Clonality:	Polyclonal
Immunogen:	The immunogen for anti-C11orf73 antibody: synthetic peptide directed towards the middle region of human C11orf73. Synthetic peptide located within the following region: DNFYNFASSFAVSQAQMTSPSEMFI PANVVLK WYENFQRRLAQNPLFWK
Formulation:	Liquid. Purified antibody supplied in 1x PBS buffer with 0.09% (w/v) sodium azide and 2% sucrose. <i>Note that this product is shipped as lyophilized powder to China customers.</i>
Purification:	Affinity Purified
Conjugation:	Unconjugated
Storage:	Store at -20°C as received.
Stability:	Stable for 12 months from date of receipt.
Predicted Protein Size:	21 kDa
Gene Name:	chromosome 11 open reading frame 73
Database Link:	<a href="#">NP_057485</a> <a href="#">Entrez Gene 51501 Human</a> <a href="#">Q53FT3</a>
Background:	The function of this protein remains unknown.
Synonyms:	C11orf73; HLD13; HSPC138; HSPC179; L7RN6; OPI10
Note:	Immunogen Sequence Homology: Dog: 100%; Pig: 100%; Rat: 100%; Horse: 100%; Human: 100%; Mouse: 100%; Bovine: 100%; Rabbit: 93%; Yeast: 90%; Guinea pig: 90%; Zebrafish: 86%



[View online »](#)

**Product images:**

WB Suggested Anti-C11orf73 Antibody Titration:  
0.2-1 ug/ml; ELISA Titer: 1:1562500; Positive  
Control: ACHN cell lysate