

Product datasheet for **TA345023**

C20orf111 (OSER1) Rabbit Polyclonal Antibody

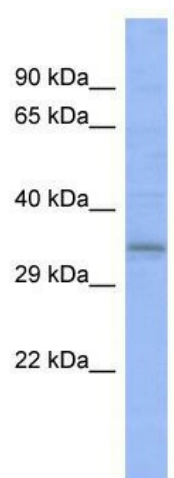
Product data:

Product Type:	Primary Antibodies
Applications:	WB
Recommended Dilution:	WB
Reactivity:	Human
Host:	Rabbit
Isotype:	IgG
Clonality:	Polyclonal
Immunogen:	The immunogen for anti-C20orf111 antibody: synthetic peptide directed towards the N terminal of human C20orf111. Synthetic peptide located within the following region: RGAVRTQRRRSKSPVLHPPKFIHCSTIASSSSSQLKHKSQTDSPDGSSG
Formulation:	Liquid. Purified antibody supplied in 1x PBS buffer with 0.09% (w/v) sodium azide and 2% sucrose. <i>Note that this product is shipped as lyophilized powder to China customers.</i>
Purification:	Affinity Purified
Conjugation:	Unconjugated
Storage:	Store at -20°C as received.
Stability:	Stable for 12 months from date of receipt.
Predicted Protein Size:	32 kDa
Gene Name:	oxidative stress responsive serine rich 1
Database Link:	NP_057554 Entrez Gene 51526 Human Q9NX31
Background:	The function of this protein remains unknown.
Synonyms:	C20orf111; dj1183l21.1; HSPC207; Osr1; Perit1
Note:	Immunogen Sequence Homology: Dog: 100%; Pig: 100%; Rat: 100%; Horse: 100%; Human: 100%; Mouse: 100%; Bovine: 100%; Rabbit: 100%; Guinea pig: 100%; Zebrafish: 92%



[View online »](#)

Product images:



WB Suggested Anti-C20orf111 Antibody Titration:
0.2-1 ug/ml; ELISA Titer: 1:1562500; Positive
Control: Human heart