

Product datasheet for **TA345020**

C3orf19 (CCDC174) Rabbit Polyclonal Antibody

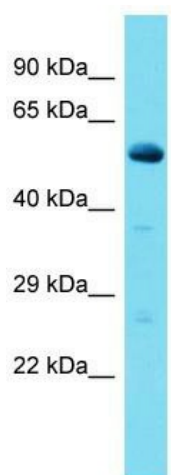
Product data:

Product Type:	Primary Antibodies
Applications:	WB
Recommended Dilution:	WB
Reactivity:	Rat
Host:	Rabbit
Isotype:	IgG
Clonality:	Polyclonal
Immunogen:	The immunogen for Anti-Ccdc174 antibody is: synthetic peptide directed towards the middle region of Rat Ccdc174. Synthetic peptide located within the following region: EEREALKKPMGPIHYEDIRENEARQLGVGYFAFARDKELRNKQMKTLEML
Formulation:	Liquid. Purified antibody supplied in 1x PBS buffer with 0.09% (w/v) sodium azide and 2% sucrose. <i>Note that this product is shipped as lyophilized powder to China customers.</i>
Purification:	Affinity Purified
Conjugation:	Unconjugated
Storage:	Store at -20°C as received.
Stability:	Stable for 12 months from date of receipt.
Predicted Protein Size:	52 kDa
Gene Name:	coiled-coil domain containing 174
Database Link:	NP_057558 Entrez Gene 297458 Rat Q6PII3
Background:	The function of this protein remains unknown.
Synonyms:	C3orf19; HSPC212; IHPM; IHPMR
Note:	Immunogen Sequence Homology: Dog: 100%; Pig: 100%; Rat: 100%; Horse: 100%; Human: 100%; Mouse: 100%; Bovine: 100%; Rabbit: 100%; Guinea pig: 93%



[View online »](#)

Product images:



Host: Rabbit
 Target Name: Ccdc174
 Sample Tissue: Rat Pancreas Lysate
 Antibody Dilution: 1.0 µg/ml

Host: Rabbit; Target Name: Ccdc174; Sample
 Tissue: Rat Pancreas lysates; Antibody Dilution:
 1.0 ug/ml