

## Product datasheet for **TA345019**

### VTA1 Rabbit Polyclonal Antibody

#### Product data:

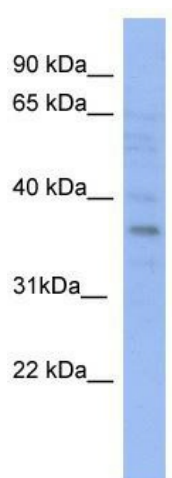
Product Type:	Primary Antibodies
Applications:	WB
Recommended Dilution:	WB
Reactivity:	Human
Host:	Rabbit
Isotype:	IgG
Clonality:	Polyclonal
Immunogen:	The immunogen for anti-VTA1 antibody: synthetic peptide directed towards the N terminal of human VTA1. Synthetic peptide located within the following region: KKQLGDNEAITQEIVGCAHLENYALKMFLYADNEDRAGRFRHKNMIKSFYT
Formulation:	Liquid. Purified antibody supplied in 1x PBS buffer with 0.09% (w/v) sodium azide and 2% sucrose. <i>Note that this product is shipped as lyophilized powder to China customers.</i>
Purification:	Affinity Purified
Conjugation:	Unconjugated
Storage:	Store at -20°C as received.
Stability:	Stable for 12 months from date of receipt.
Predicted Protein Size:	34 kDa
Gene Name:	vesicle trafficking 1
Database Link:	<a href="#">NP_057569</a> <a href="#">Entrez Gene 51534 Human</a> <a href="#">Q9NP79</a>
Background:	C6ORF55 encodes a protein involved in trafficking of the multivesicular body, an endosomal compartment involved in sorting membrane proteins for degradation in lysosomes (Ward et al., 2005 [PubMed 15644320]).
Synonyms:	C6orf55; DRG-1; DRG1; HSPC228; LIP5; My012; SBP1
Note:	Immunogen Sequence Homology: Dog: 100%; Pig: 100%; Rat: 100%; Horse: 100%; Human: 100%; Mouse: 100%; Bovine: 100%; Rabbit: 100%; Guinea pig: 100%; Zebrafish: 86%



[View online »](#)

Protein Pathways: Endocytosis

### Product images:



WB Suggested Anti-VTA1 Antibody Titration: 0.2-1 ug/ml; ELISA Titer: 1:312500; Positive Control: HepG2 cell lysate