

Product datasheet for **TA345018**

FAM178B Rabbit Polyclonal Antibody

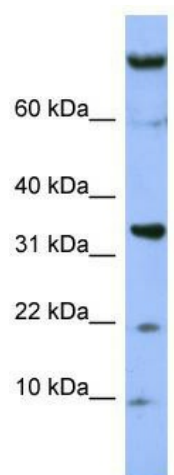
Product data:

Product Type:	Primary Antibodies
Applications:	WB
Recommended Dilution:	WB
Reactivity:	Human
Host:	Rabbit
Isotype:	IgG
Clonality:	Polyclonal
Immunogen:	The immunogen for anti-FAM178B antibody: synthetic peptide directed towards the middle region of human LOC51252. Synthetic peptide located within the following region: VVSCQDITPDQWGELQLLCMQLDRHISTQIRESPQAMHRTMLKDLATQTY
Formulation:	Liquid. Purified antibody supplied in 1x PBS buffer with 0.09% (w/v) sodium azide and 2% sucrose. <i>Note that this product is shipped as lyophilized powder to China customers.</i>
Purification:	Affinity Purified
Conjugation:	Unconjugated
Storage:	Store at -20°C as received.
Stability:	Stable for 12 months from date of receipt.
Predicted Protein Size:	71 kDa
Gene Name:	family with sequence similarity 178 member B
Database Link:	NP_001116118 Entrez Gene 51252 Human Q8IXR5
Background:	The function of this protein remains unknown.
Synonyms:	LOC51252
Note:	Immunogen Sequence Homology: Human: 100%; Pig: 93%; Rat: 93%; Horse: 93%; Mouse: 93%; Rabbit: 93%; Dog: 86%; Bovine: 86%; Guinea pig: 86%



[View online »](#)

Product images:



WB Suggested Anti-FAM178B Antibody Titration:
0.2-1 ug/ml; ELISA Titer: 1:1562500; Positive
Control: HepG2 cell lysate