

Product datasheet for **TA345017**

MRPL37 Rabbit Polyclonal Antibody

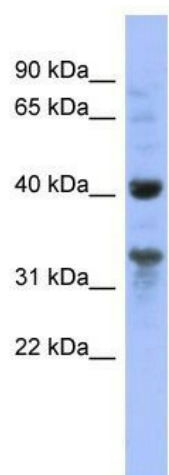
Product data:

Product Type:	Primary Antibodies
Applications:	WB
Recommended Dilution:	WB
Reactivity:	Human
Host:	Rabbit
Isotype:	IgG
Clonality:	Polyclonal
Immunogen:	The immunogen for anti-MRPL37 antibody: synthetic peptide directed towards the N terminal of human MRPL37. Synthetic peptide located within the following region: VRSTRKSEPPPLDRVYEIPGLEPITFAGKMHFVPWLARPIFPPWDRGYKD
Formulation:	Liquid. Purified antibody supplied in 1x PBS buffer with 0.09% (w/v) sodium azide and 2% sucrose.
Purification:	Affinity Purified
Conjugation:	Unconjugated
Storage:	Store at -20°C as received.
Stability:	Stable for 12 months from date of receipt.
Predicted Protein Size:	48 kDa
Gene Name:	mitochondrial ribosomal protein L37
Database Link:	NP_057575 Entrez Gene 51253 Human Q9BZE1
Background:	Mammalian mitochondrial ribosomal proteins are encoded by nuclear genes and help in protein synthesis within the mitochondrion. Mitochondrial ribosomes (mitoribosomes) consist of a small 28S subunit and a large 39S subunit. They have an estimated 75% prot
Synonyms:	L37mt; MRP-L2; MRP-L37; MRPL2; RPML2
Note:	Immunogen Sequence Homology: Pig: 100%; Rat: 100%; Horse: 100%; Human: 100%; Mouse: 100%; Bovine: 100%; Rabbit: 100%; Guinea pig: 100%; Dog: 86%



[View online »](#)

Product images:



WB Suggested Anti-MRPL37 Antibody Titration:
0.2-1 ug/ml; ELISA Titer: 1:1562500; Positive
Control: 293T cell lysate