

Product datasheet for **TA345016**

TBC1D7 Rabbit Polyclonal Antibody

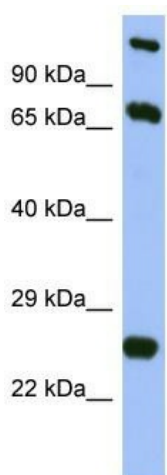
Product data:

Product Type:	Primary Antibodies
Applications:	WB
Recommended Dilution:	WB
Reactivity:	Human
Host:	Rabbit
Isotype:	IgG
Clonality:	Polyclonal
Immunogen:	The immunogen for Anti-TBC1D7 antibody is: synthetic peptide directed towards the middle region of Human TBC1D7. Synthetic peptide located within the following region: MYQLESGKLPSPSPFLPKAFEQYLNLEDGRLLTHLRMCSAAPKLPYDLW
Formulation:	Liquid. Purified antibody supplied in 1x PBS buffer with 0.09% (w/v) sodium azide and 2% sucrose.
Purification:	Affinity Purified
Conjugation:	Unconjugated
Storage:	Store at -20°C as received.
Stability:	Stable for 12 months from date of receipt.
Predicted Protein Size:	27 kDa
Gene Name:	TBC1 domain family member 7
Database Link:	NP_001137438 Entrez Gene 51256 Human Q9P0N9
Background:	TBC1D7 belongs to a family of proteins sharing a 180- to 200-amino acid TBC domain presumed to have a role in regulating cell growth and differentiation. These proteins share significant homology with TRE2, yeast Bub2, and CDC16.
Synonyms:	MGCPH; PIG51; TBC7
Note:	Immunogen Sequence Homology: Dog: 100%; Pig: 100%; Rat: 100%; Goat: 100%; Horse: 100%; Human: 100%; Mouse: 100%; Bovine: 100%; Guinea pig: 100%; Rabbit: 93%



[View online »](#)

Product images:



Host: Rabbit
Target Name: TBC1D7
Sample Tissue: Fetal Brain Lysate
Antibody Dilution: 1.0 μ g/ml

Host: Rabbit; Target Name: TBC1D7; Sample
Tissue: Fetal Brain lysates; Antibody Dilution: 1.0
ug/ml