

Product datasheet for **TA345015**

TBC1D7 Rabbit Polyclonal Antibody

Product data:

Product Type:	Primary Antibodies
Applications:	WB
Recommended Dilution:	WB
Reactivity:	Mouse
Host:	Rabbit
Isotype:	IgG
Clonality:	Polyclonal
Immunogen:	The immunogen for Anti-Tbc1d7 antibody is: synthetic peptide directed towards the C-terminal region of Mouse Tbc1d7. Synthetic peptide located within the following region: ISRCFVKQLNNKYRDALPQLPKAFEQYLNLEDSRLLSHLKTCSAVSKLPY
Formulation:	Liquid. Purified antibody supplied in 1x PBS buffer with 0.09% (w/v) sodium azide and 2% sucrose. <i>Note that this product is shipped as lyophilized powder to China customers.</i>
Purification:	Affinity Purified
Conjugation:	Unconjugated
Storage:	Store at -20°C as received.
Stability:	Stable for 12 months from date of receipt.
Predicted Protein Size:	32 kDa
Gene Name:	TBC1 domain family member 7
Database Link:	NP_001137438 Entrez Gene 67046 Mouse Q9P0N9



[View online »](#)

Background:

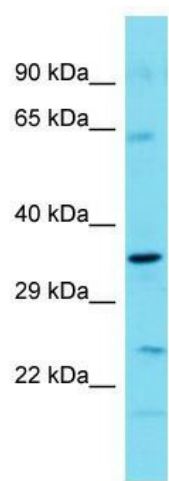
Tbc1d7 is a component of the TSC-TBC complex, that contains TBC1D7 in addition to the TSC1-TSC2 complex and consists of the functional complex possessing GTPase-activating protein (GAP) activity toward RHEB in response to alterations in specific cellular growth conditions. The small GTPase RHEB is a direct activator of the protein kinase activity of mTORC1 and the TSC-TBC complex acts as a negative regulator of mTORC1 signaling cascade by acting as a GAP for RHEB. Participates in the proper sensing of growth factors and glucose, but not amino acids, by mTORC1. It is unclear whether TBC1D7 acts as a GTPase-activating protein and additional studies are required to answer this question.

Synonyms:

MGCPH; PIG51; TBC7

Note:

Immunogen Sequence Homology: Dog: 100%; Pig: 100%; Goat: 100%; Horse: 100%; Human: 100%; Mouse: 100%; Bovine: 100%; Rabbit: 100%; Rat: 93%; Guinea pig: 93%

Product images:

Host: Rabbit; Target Name: Tbc1d7; Sample Tissue: Mouse Stomach lysates; Antibody Dilution: 1.0 ug/ml