

## Product datasheet for **TA345008**

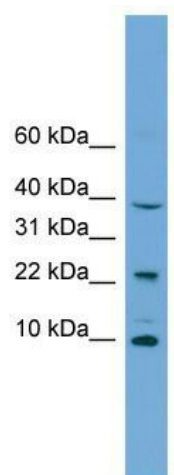
### CHCHD8 (COA4) Rabbit Polyclonal Antibody

#### Product data:

Product Type:	Primary Antibodies
Applications:	WB
Recommended Dilution:	WB
Reactivity:	Human
Host:	Rabbit
Isotype:	IgG
Clonality:	Polyclonal
Immunogen:	The immunogen for anti-CHCHD8 antibody: synthetic peptide directed towards the middle region of human CHCHD8. Synthetic peptide located within the following region: SHFAVQECMAQHQDWRQCQPQVQAFKDCMSEQQARRQEELQRRREQAGAH
Formulation:	Liquid. Purified antibody supplied in 1x PBS buffer with 0.09% (w/v) sodium azide and 2% sucrose. <i>Note that this product is shipped as lyophilized powder to China customers.</i>
Purification:	Affinity Purified
Conjugation:	Unconjugated
Storage:	Store at -20°C as received.
Stability:	Stable for 12 months from date of receipt.
Predicted Protein Size:	10 kDa
Gene Name:	cytochrome c oxidase assembly factor 4 homolog
Database Link:	<a href="#">NP_057649</a> <a href="#">Entrez Gene 51287 Human</a> <a href="#">Q9NYJ1</a>
Background:	The function of CHCHD8 remains unknown.
Synonyms:	CHCHD8; CMC3; E2IG2
Note:	Immunogen Sequence Homology: Human: 100%; Pig: 86%; Rat: 86%; Guinea pig: 86%; Rabbit: 83%; Horse: 79%; Mouse: 79%



[View online »](#)

**Product images:**

WB Suggested Anti-CHCHD8 Antibody Titration:  
0.2-1 ug/ml; Positive Control: Jurkat cell lysate