

## Product datasheet for **TA345007**

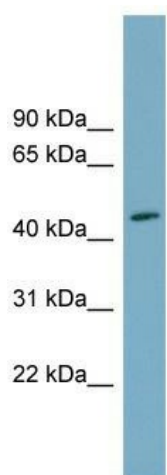
### FAM53C Rabbit Polyclonal Antibody

#### Product data:

Product Type:	Primary Antibodies
Applications:	WB
Recommended Dilution:	WB
Reactivity:	Human
Host:	Rabbit
Isotype:	IgG
Clonality:	Polyclonal
Immunogen:	The immunogen for anti-FAM53C antibody: synthetic peptide directed towards the N terminal of human FAM53C. Synthetic peptide located within the following region: SNCGNSFQLVSEGASWRGLPHCSCAEFQDSLNFYHPSGLSLHLRPPSRG
Formulation:	Liquid. Purified antibody supplied in 1x PBS buffer with 0.09% (w/v) sodium azide and 2% sucrose. <i>Note that this product is shipped as lyophilized powder to China customers.</i>
Purification:	Affinity Purified
Conjugation:	Unconjugated
Storage:	Store at -20°C as received.
Stability:	Stable for 12 months from date of receipt.
Predicted Protein Size:	43 kDa
Gene Name:	family with sequence similarity 53 member C
Database Link:	<a href="#">NP_057689</a> <a href="#">Entrez Gene 51307 Human</a> <a href="#">Q9NYF3</a>
Background:	The function of this protein remains unknown.
Synonyms:	C5orf6
Note:	Immunogen Sequence Homology: Pig: 100%; Rat: 100%; Human: 100%; Mouse: 100%; Guinea pig: 100%; Dog: 93%; Horse: 93%; Bovine: 93%; Rabbit: 93%



[View online »](#)

**Product images:**

WB Suggested Anti-FAM53C Antibody Titration:  
0.2-1 ug/ml; Positive Control: Human Small  
Intestine