

## Product datasheet for **TA345006**

### KRCC1 Rabbit Polyclonal Antibody

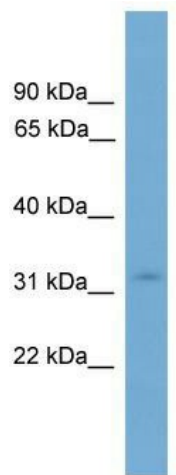
#### Product data:

Product Type:	Primary Antibodies
Applications:	WB
Recommended Dilution:	WB
Reactivity:	Human
Host:	Rabbit
Isotype:	IgG
Clonality:	Polyclonal
Immunogen:	The immunogen for anti-KRCC1 antibody: synthetic peptide directed towards the N terminal of human KRCC1. Synthetic peptide located within the following region: KMKGDYLETCGYKGEVNSRPTYRMFDQRLPSETIQTYPRSCNIPQTVENR
Formulation:	Liquid. Purified antibody supplied in 1x PBS buffer with 0.09% (w/v) sodium azide and 2% sucrose. <i>Note that this product is shipped as lyophilized powder to China customers.</i>
Purification:	Affinity Purified
Conjugation:	Unconjugated
Storage:	Store at -20°C as received.
Stability:	Stable for 12 months from date of receipt.
Predicted Protein Size:	31 kDa
Gene Name:	lysine-rich coiled-coil 1
Database Link:	<a href="#">NP_057702</a> <a href="#">Entrez Gene 51315 Human</a> <a href="#">Q9NPI7</a>
Background:	The function of this protein remains unknown.
Synonyms:	CHBP2
Note:	Immunogen Sequence Homology: Human: 100%; Horse: 77%



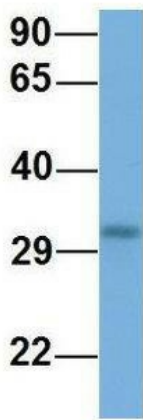
[View online »](#)

Product images:



WB Suggested Anti-KRCC1 Antibody Titration: 0.2-1 ug/ml; Positive Control: ACHN cell lysate. KRCC1 is supported by BioGPS gene expression data to be expressed in ACHN

**KRCC1**



Rabbit Anti-KRCC1  
 Sample Type: Human 721\_B  
 Antibody Concentration: 1ug/mL

Host: Rabbit; Target Name: KRCC1; Sample Tissue: Human 721\_B; Antibody Dilution: 1.0 ug/ml; KRCC1 is supported by BioGPS gene expression data to be expressed in 721\_B