

Product datasheet for **TA345005**

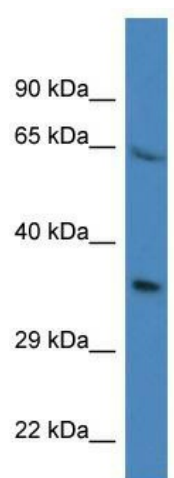
PRR16 Rabbit Polyclonal Antibody

Product data:

Product Type:	Primary Antibodies
Applications:	WB
Recommended Dilution:	WB
Reactivity:	Mouse
Host:	Rabbit
Isotype:	IgG
Clonality:	Polyclonal
Immunogen:	The immunogen for anti-Prr16 antibody: synthetic peptide corresponding to a region of Mouse. Synthetic peptide located within the following region: GDLKDVAKELKEVVDQIDTLSDLQLEDEMTDSSKDTLNSSSSGTTASS
Formulation:	Liquid. Purified antibody supplied in 1x PBS buffer with 0.09% (w/v) sodium azide and 2% sucrose.
Purification:	Affinity Purified
Conjugation:	Unconjugated
Storage:	Store at -20°C as received.
Stability:	Stable for 12 months from date of receipt.
Predicted Protein Size:	33 kDa
Gene Name:	proline rich 16
Database Link:	NP_057728 Entrez Gene 71373 Mouse Q569H4
Background:	The function remains unknown.
Synonyms:	DSC54; LARGEN
Note:	Immunogen Sequence Homology: Dog: 100%; Pig: 100%; Rat: 100%; Horse: 100%; Human: 100%; Mouse: 100%; Bovine: 100%; Rabbit: 100%; Guinea pig: 100%; Zebrafish: 75%


[View online »](#)

Product images:



WB Suggested Anti-Prr16 Antibody; Titration: 1.0 ug/ml; Positive Control: Mouse Kidney